



The Sizewell C Project

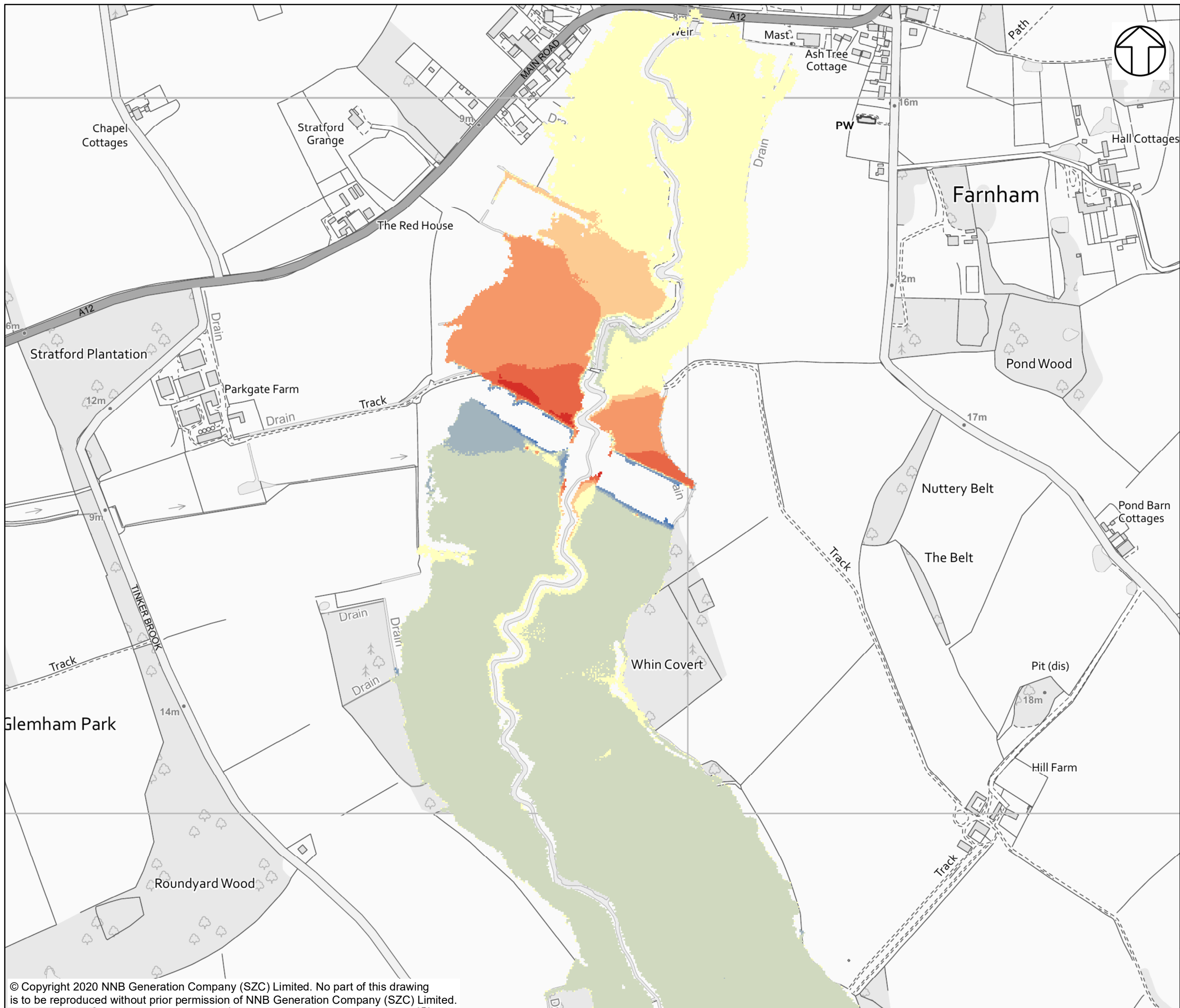
5.5 Two Village Bypass Flood Risk Assessment Figures 71 - 80

Revision: 1.0
Applicable Regulation: Regulation 5(2)(e)
PINS Reference Number: EN010012

May 2020

Planning Act 2008
Infrastructure Planning (Applications: Prescribed
Forms and Procedure) Regulations 2009



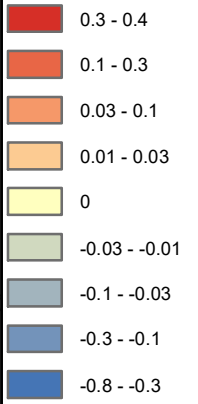


NOTES

KEY

DIFFERENCE 1000 YEAR

DIFFERENCE IN FLOOD DEPTH (M)



NOT PROTECTIVELY MARKED

COPYRIGHT
 Reproduced from Ordnance Survey map with the permission of Ordnance Survey on behalf of the controller of Her Majesty's Stationary Office © Crown Copyright (2019). All Rights reserved. NNB GenCo 0100060408.

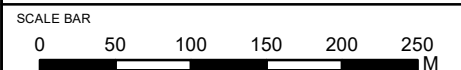


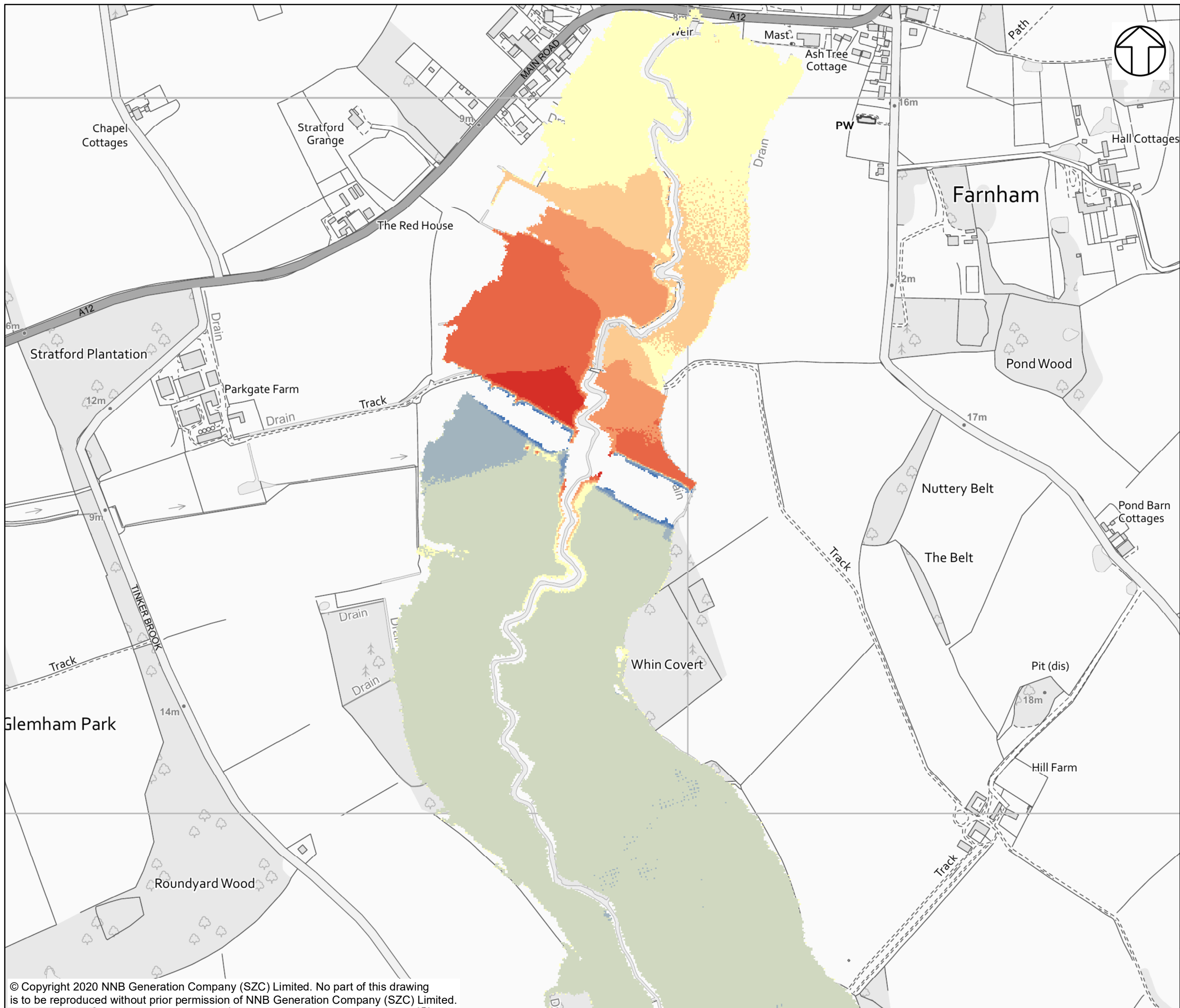
DOCUMENT:
 SIZEWELL C
 TWO VILLAGE BYPASS
 FLUVIAL MODEL RESULTS

DRAWING TITLE:
 FLUVIAL MODELLING DIFFERENCE BETWEEN
 BASELINE AND WITH SCHEME FLOOD DEPTH
 FOR 1 IN 1,000-YEAR EVENT

DRAWING NO:
 FIGURE 71

DATE: FEB 2020 DRAWN: E.H. SCALE: 1:5,000 @A3





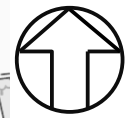
NOTES

KEY

DIFFERENCE 1000 YEAR +35%CC

DIFFERENCE IN FLOOD DEPTH (M)

- 0.3 - 0.45
- 0.1 - 0.3
- 0.03 - 0.1
- 0.01 - 0.03
- 0
- 0.03 - -0.01
- 0.1 - -0.03
- 0.3 - -0.1
- 0.75 - -0.3



NOT PROTECTIVELY MARKED

COPYRIGHT
 Reproduced from Ordnance Survey map with the permission of Ordnance Survey on behalf of the controller of Her Majesty's Stationary Office © Crown Copyright (2019). All Rights reserved. NNB GenCo 0100060408.

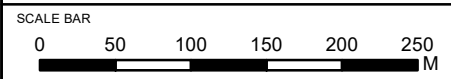


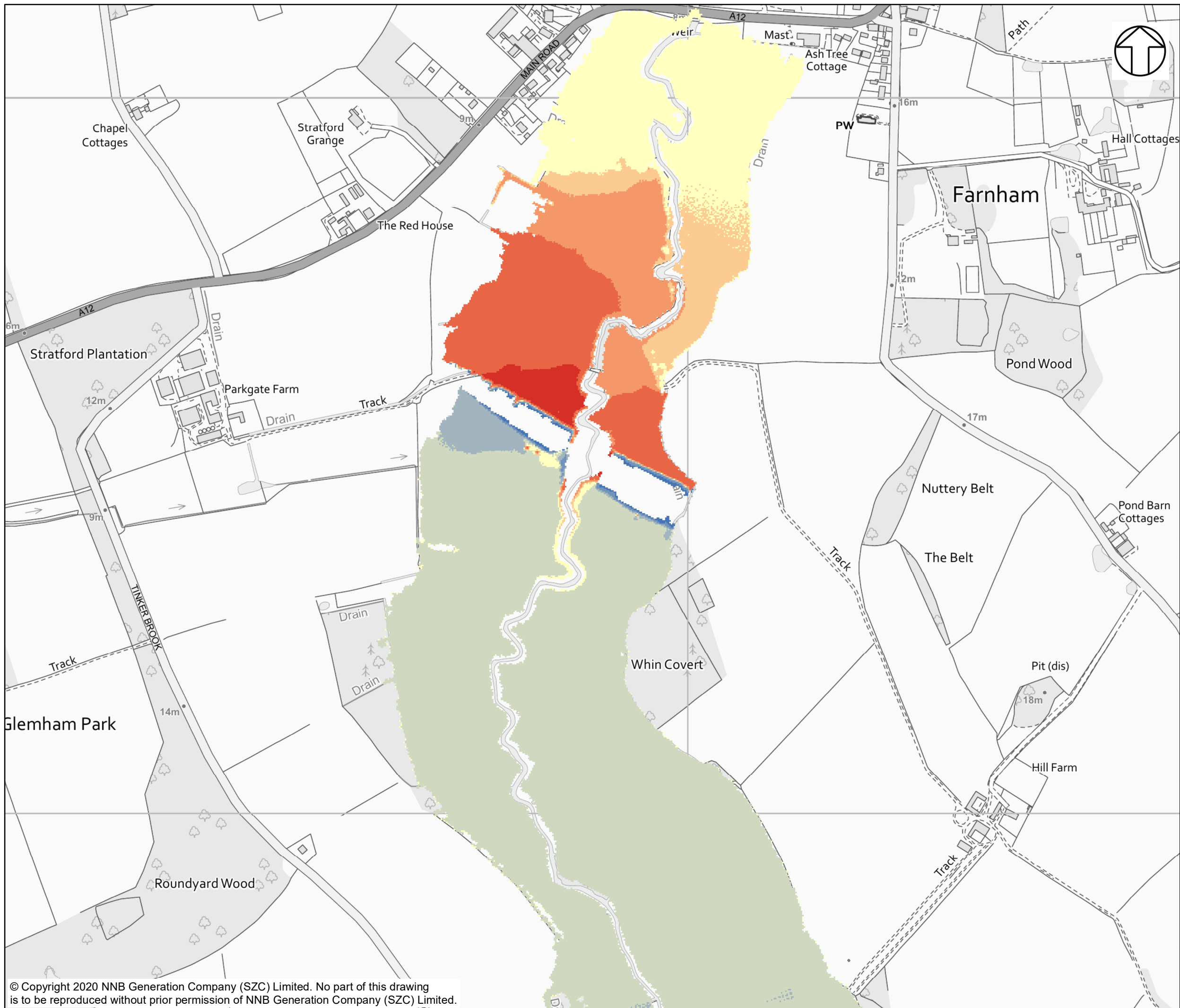
DOCUMENT:
 SIZEWELL C
 TWO VILLAGE BYPASS
 FLUVIAL MODEL RESULTS

DRAWING TITLE:
 FLUVIAL MODELLING DIFFERENCE BETWEEN
 BASELINE AND WITH SCHEME FLOOD DEPTH
 FOR 1 IN 1,000-YEAR EVENT WITH 35% FOR
 CLIMATE CHANGE ALLOWANCE

DRAWING NO:
 FIGURE 72

DATE: FEB 2020 **DRAWN:** E.H. **SCALE:** 1:5,000 @A3





NOTES

KEY

DIFFERENCE 1000 YEAR +65%CC

DIFFERENCE IN FLOOD DEPTH (M)

- 0.3 - 0.5
- 0.1 - 0.3
- 0.03 - 0.1
- 0.01 - 0.03
- 0
- 0.03 - -0.01
- 0.1 - -0.03
- 0.3 - -0.1
- 0.75 - -0.3



NOT PROTECTIVELY MARKED

COPYRIGHT
 Reproduced from Ordnance Survey map with the permission of Ordnance Survey on behalf of the controller of Her Majesty's Stationery Office © Crown Copyright (2019). All Rights reserved. NNB GenCo 0100060408.

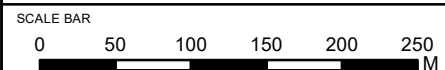


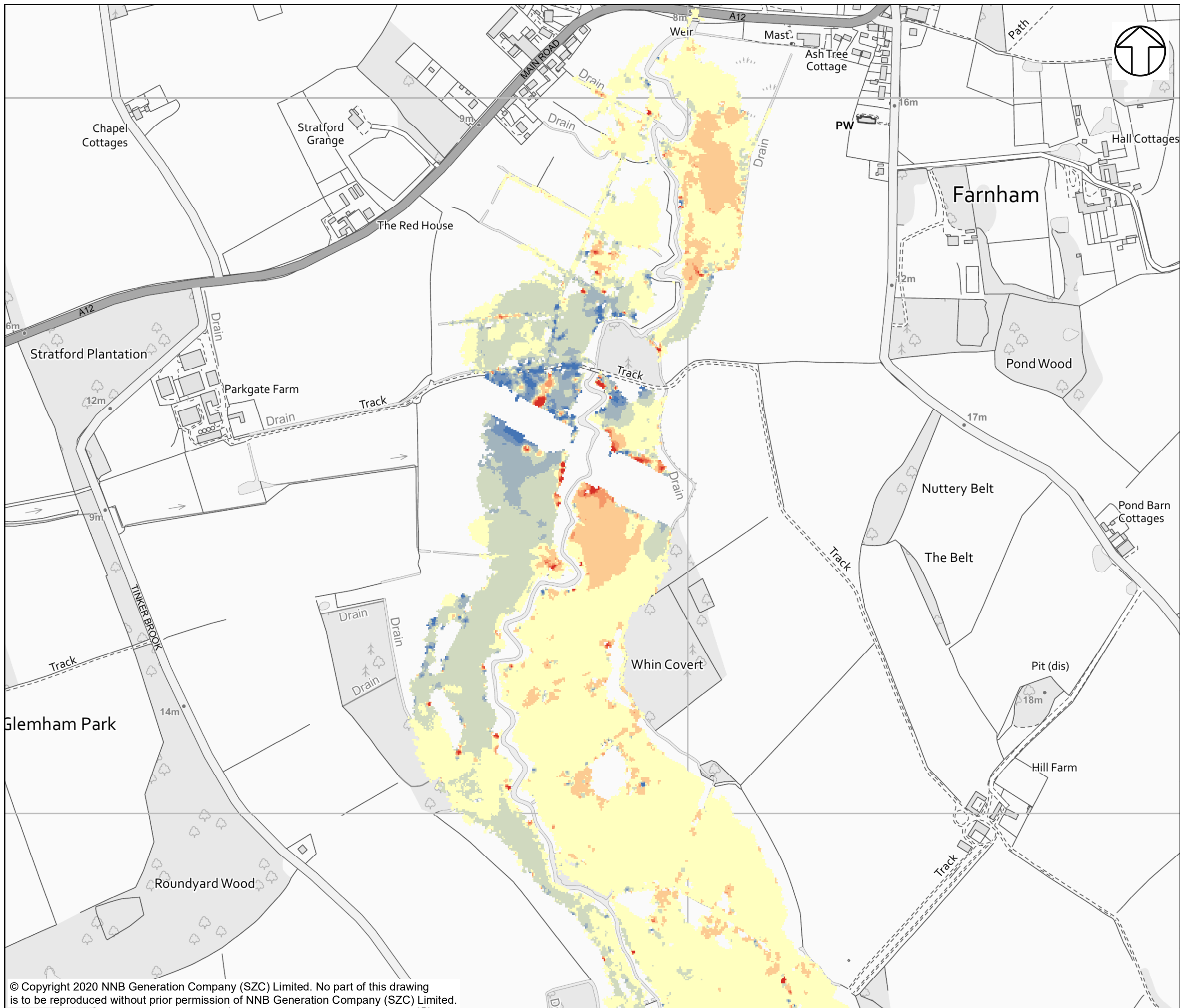
DOCUMENT:
 SIZEWELL C
 TWO VILLAGE BYPASS
 FLUVIAL MODEL RESULTS

DRAWING TITLE:
 FLUVIAL MODELLING DIFFERENCE BETWEEN
 BASELINE AND WITH SCHEME FLOOD DEPTH
 FOR 1 IN 1,000-YEAR EVENT WITH 65% FOR
 CLIMATE CHANGE ALLOWANCE

DRAWING NO:
 FIGURE 73

DATE: FEB 2020 **DRAWN:** E.H. **SCALE:** 1:5,000 @A3





NOTES

KEY

DIFFERENCE 20 YEAR PRESENT DAY

DIFFERENCE IN FLOOD VELOCITY (m/s)



NOT PROTECTIVELY MARKED

COPYRIGHT
 Reproduced from Ordnance Survey map with the permission of Ordnance Survey on behalf of the controller of Her Majesty's Stationary Office © Crown Copyright (2019). All Rights reserved. NNB GenCo 0100060408.

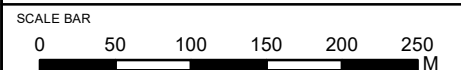


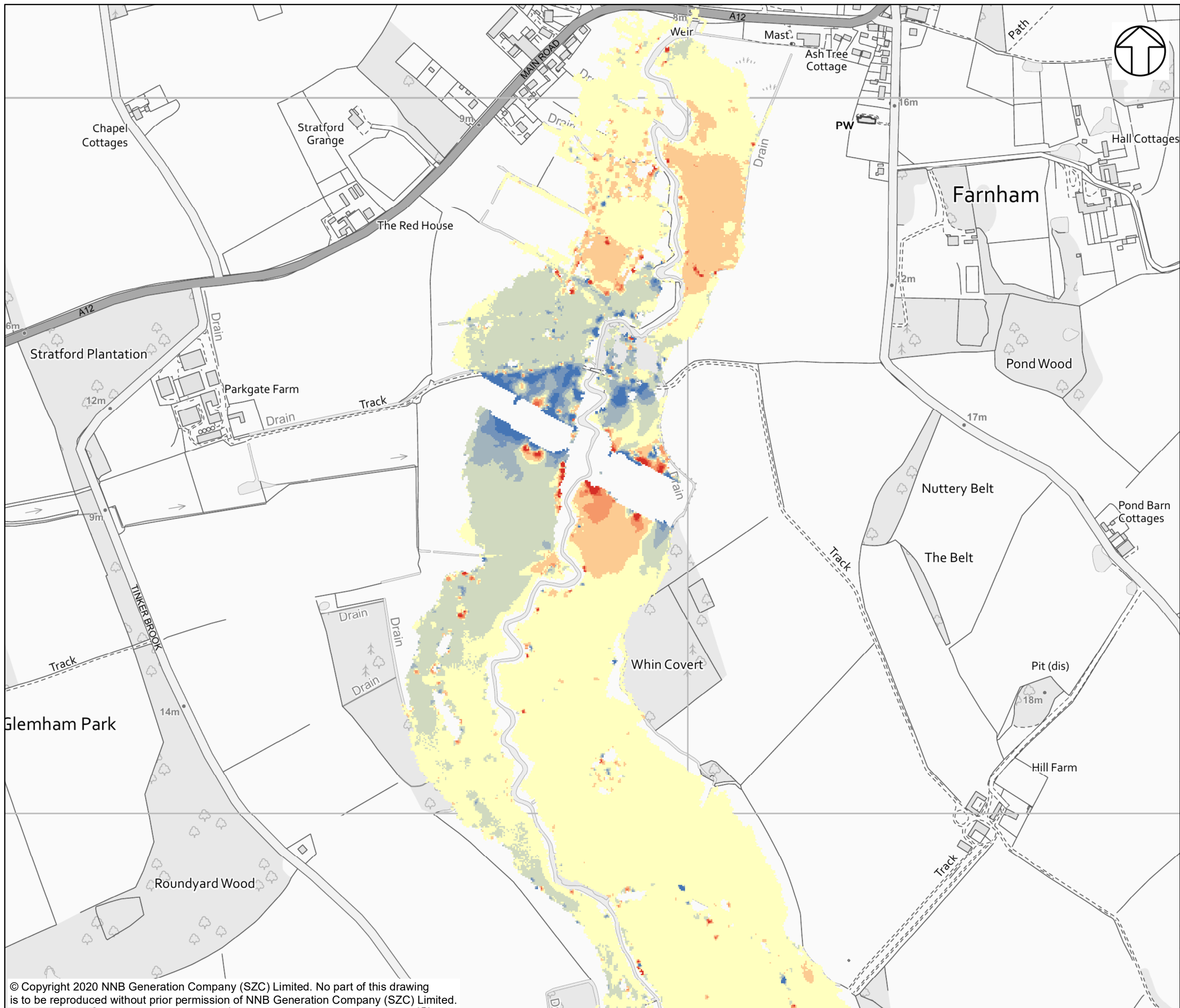
DOCUMENT:
 SIZEWELL C
 TWO VILLAGE BYPASS
 FLUVIAL MODEL RESULTS

DRAWING TITLE:
 FLUVIAL MODELLING DIFFERENCE BETWEEN
 BASELINE AND WITH SCHEME FLOOD VELOCITY
 FOR 1 IN 20-YEAR EVENT

DRAWING NO:
 FIGURE 74

DATE: FEB 2020 DRAWN: E.H. SCALE: 1:5,000 @A3



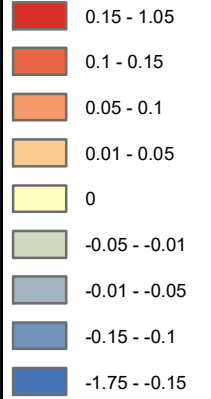


NOTES

KEY

DIFFERENCE 20 YEAR +35%CC

DIFFERENCE IN FLOOD VELOCITY (m/s)



NOT PROTECTIVELY MARKED

COPYRIGHT
 Reproduced from Ordnance Survey map with the permission of Ordnance Survey on behalf of the controller of Her Majesty's Stationary Office © Crown Copyright (2019). All Rights reserved. NNB GenCo 0100060408.

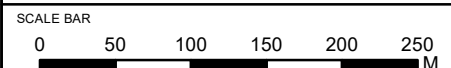


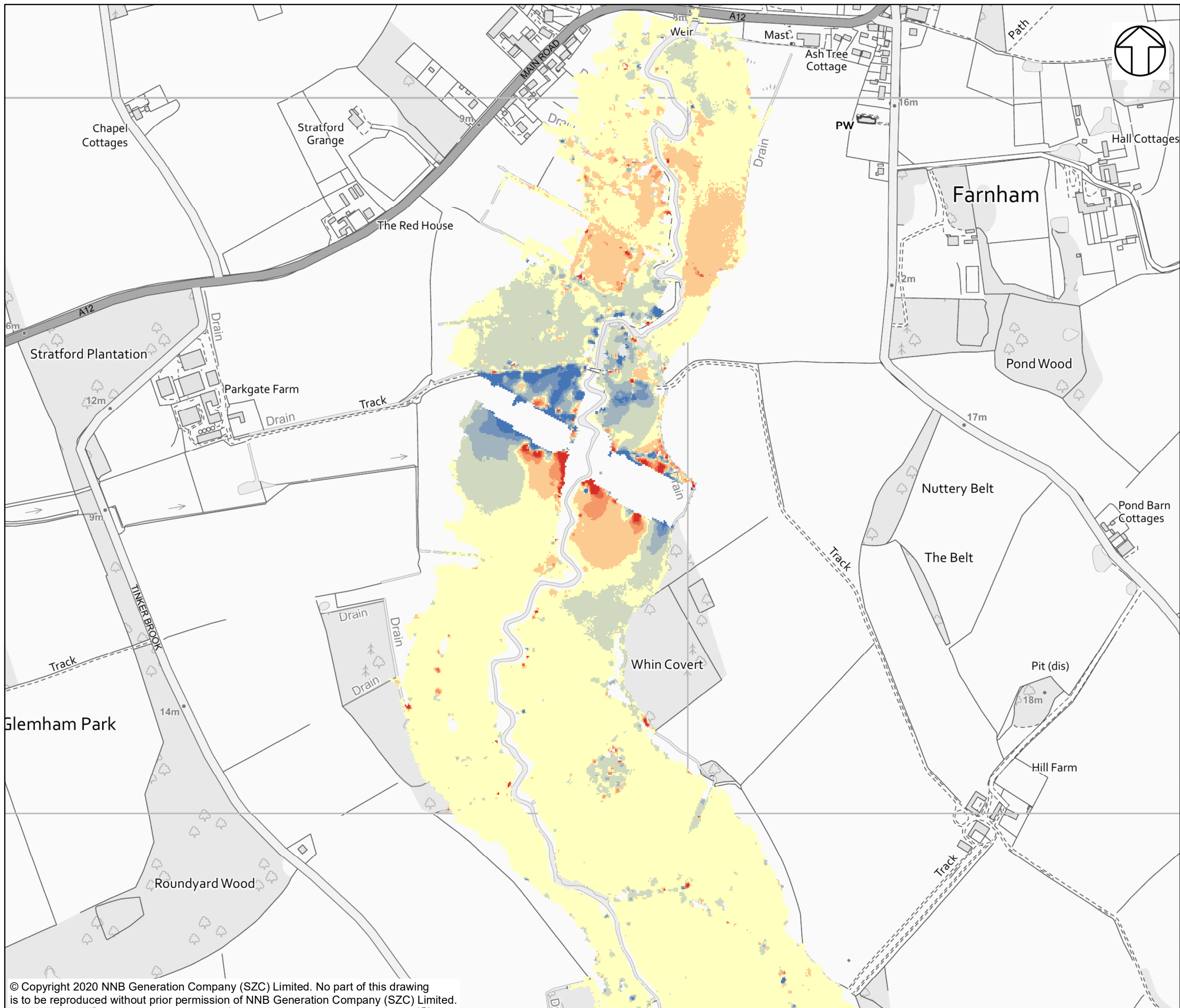
DOCUMENT:
 SIZEWELL C
 TWO VILLAGE BYPASS
 FLUVIAL MODEL RESULTS

DRAWING TITLE:
 FLUVIAL MODELLING DIFFERENCE BETWEEN
 BASELINE AND WITH SCHEME FLOOD VELOCITY
 FOR 1 IN 20-YEAR EVENT WITH 35% FOR
 CLIMATE CHANGE ALLOWANCE

DRAWING NO:
 FIGURE 75

DATE: FEB 2020 **DRAWN:** E.H. **SCALE:** 1:5,000 @A3





NOTES

KEY

DIFFERENCE 20 YEAR +65%CC

DIFFERENCE IN FLOOD VELOCITY (m/s)

- 0.15 - 1.05
- 0.1 - 0.15
- 0.05 - 0.1
- 0.01 - 0.05
- 0.01 - 0.01
- 0.05 - -0.01
- 0.01 - -0.05
- 0.15 - -0.1
- 0.8 - -0.15



NOT PROTECTIVELY MARKED

COPYRIGHT
 Reproduced from Ordnance Survey map with the permission of Ordnance Survey on behalf of the controller of Her Majesty's Stationary Office © Crown Copyright (2019). All Rights reserved. NNB GenCo 0100060408.

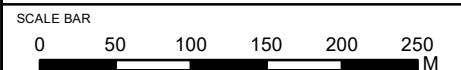


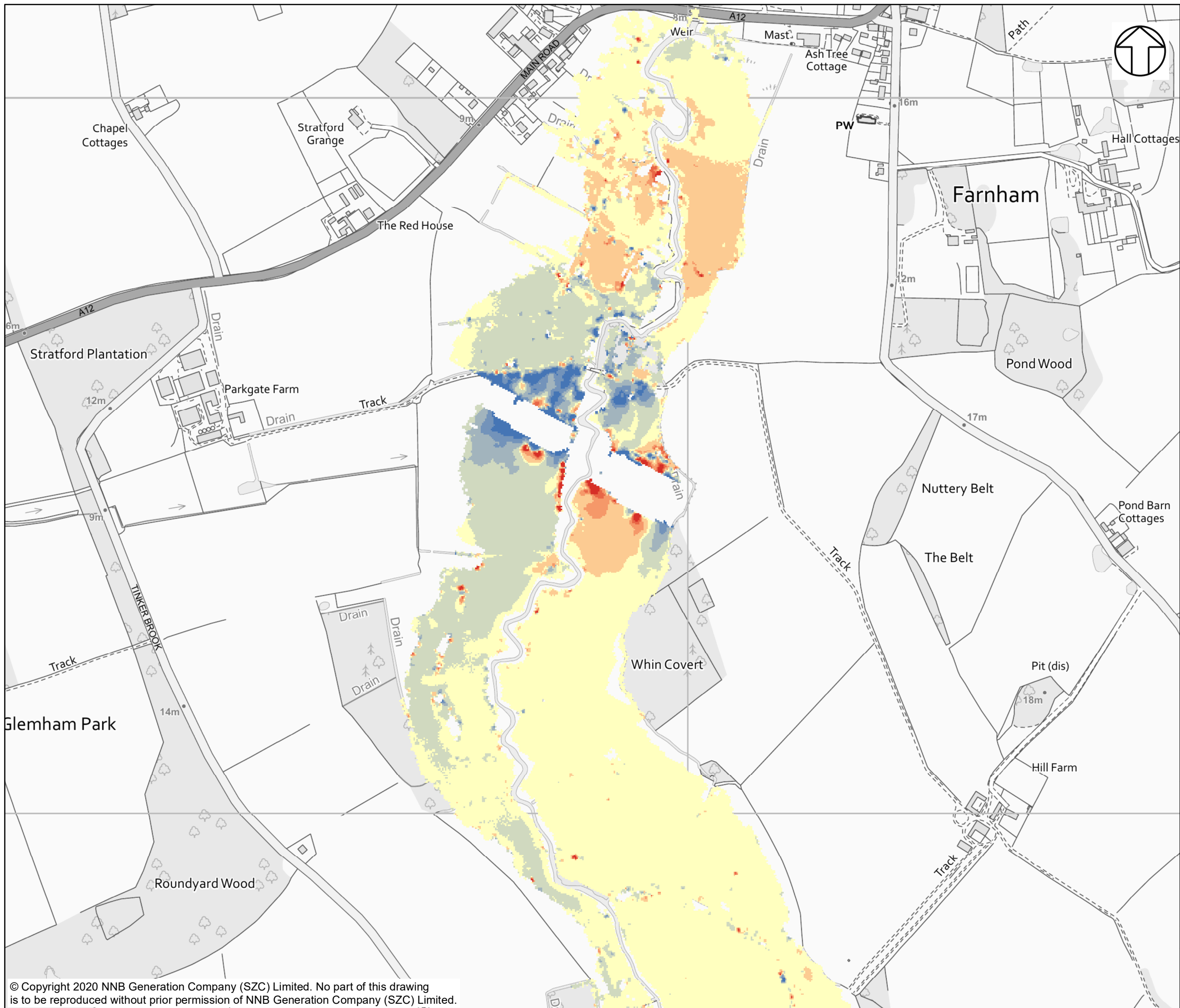
DOCUMENT:
 SIZEWELL C
 TWO VILLAGE BYPASS
 FLUVIAL MODEL RESULTS

DRAWING TITLE:
 FLUVIAL MODELLING DIFFERENCE BETWEEN
 BASELINE AND WITH SCHEME FLOOD VELOCITY
 FOR 1 IN 20-YEAR EVENT WITH 65% FOR
 CLIMATE CHANGE ALLOWANCE

DRAWING NO:
 FIGURE 76

DATE: FEB 2020 **DRAWN:** E.H. **SCALE:** 1:5,000 @A3



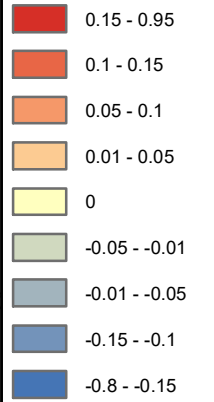


NOTES

KEY

DIFFERENCE 100 YEAR PRESENT DAY

DIFFERENCE IN FLOOD VELOCITY (m/s)



NOT PROTECTIVELY MARKED

COPYRIGHT
 Reproduced from Ordnance Survey map with the permission of Ordnance Survey on behalf of the controller of Her Majesty's Stationary Office © Crown Copyright (2019). All Rights reserved. NNB GenCo 0100060408.

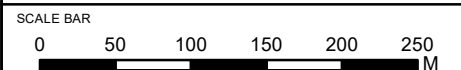


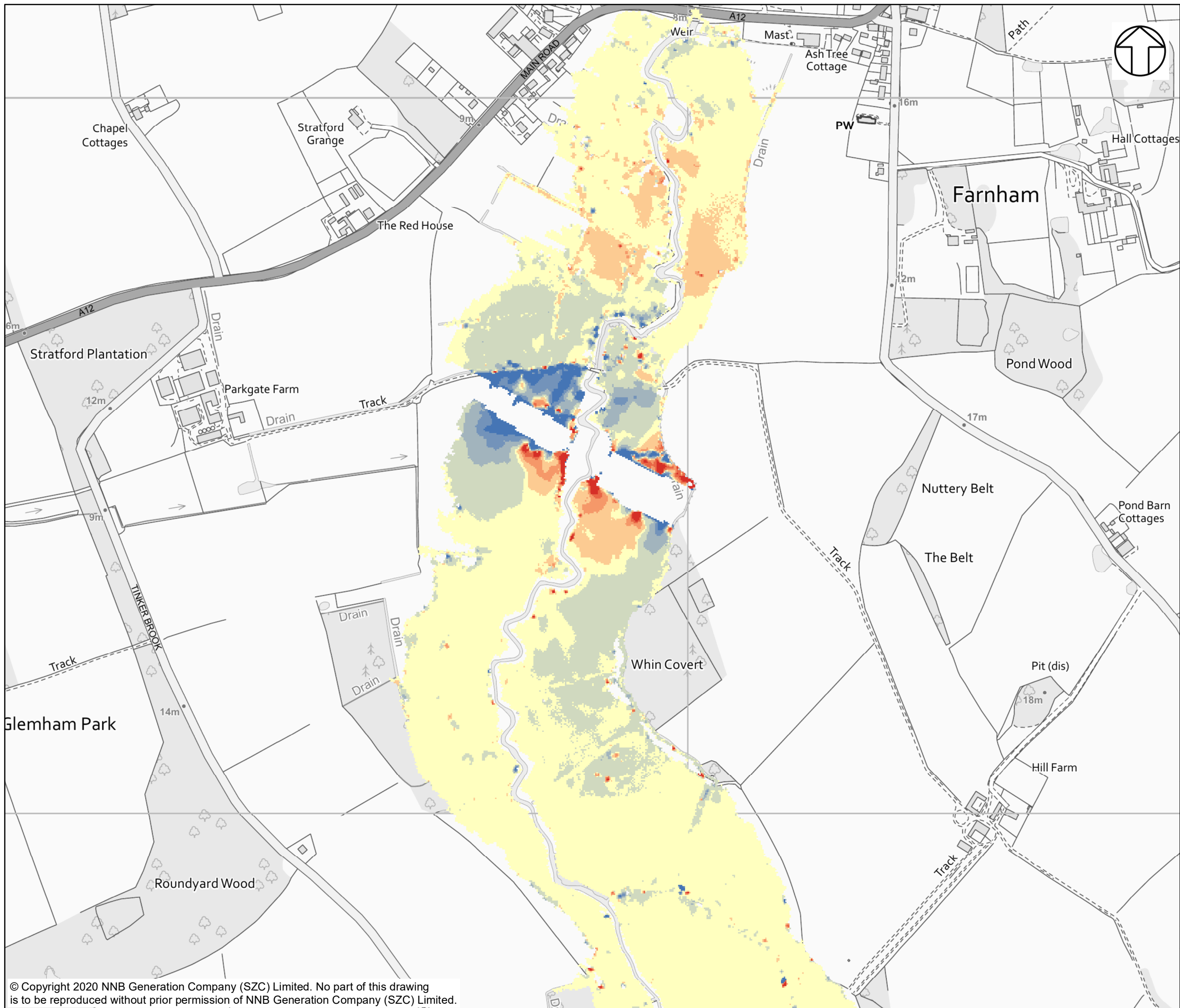
DOCUMENT:
 SIZEWELL C
 TWO VILLAGE BYPASS
 FLUVIAL MODEL RESULTS

DRAWING TITLE:
 FLUVIAL MODELLING DIFFERENCE BETWEEN
 BASELINE AND WITH SCHEME FLOOD VELOCITY
 FOR 1 IN 100-YEAR EVENT

DRAWING NO:
 FIGURE 77

DATE: FEB 2020 DRAWN: E.H. SCALE: 1:5,000 @A3





NOTES

KEY

DIFFERENCE 100 YEAR +35%CC

DIFFERENCE IN FLOOD VELOCITY (m/s)

- 0.15 - 0.95
- 0.1 - 0.15
- 0.05 - 0.1
- 0.01 - 0.05
- 0
- 0.05 - -0.01
- 0.01 - -0.05
- 0.15 - -0.1
- 1.5 - -0.15



NOT PROTECTIVELY MARKED

COPYRIGHT
 Reproduced from Ordnance Survey map with the permission of Ordnance Survey on behalf of the controller of Her Majesty's Stationery Office © Crown Copyright (2019). All Rights reserved. NNB GenCo 0100060408.

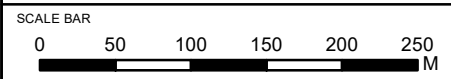


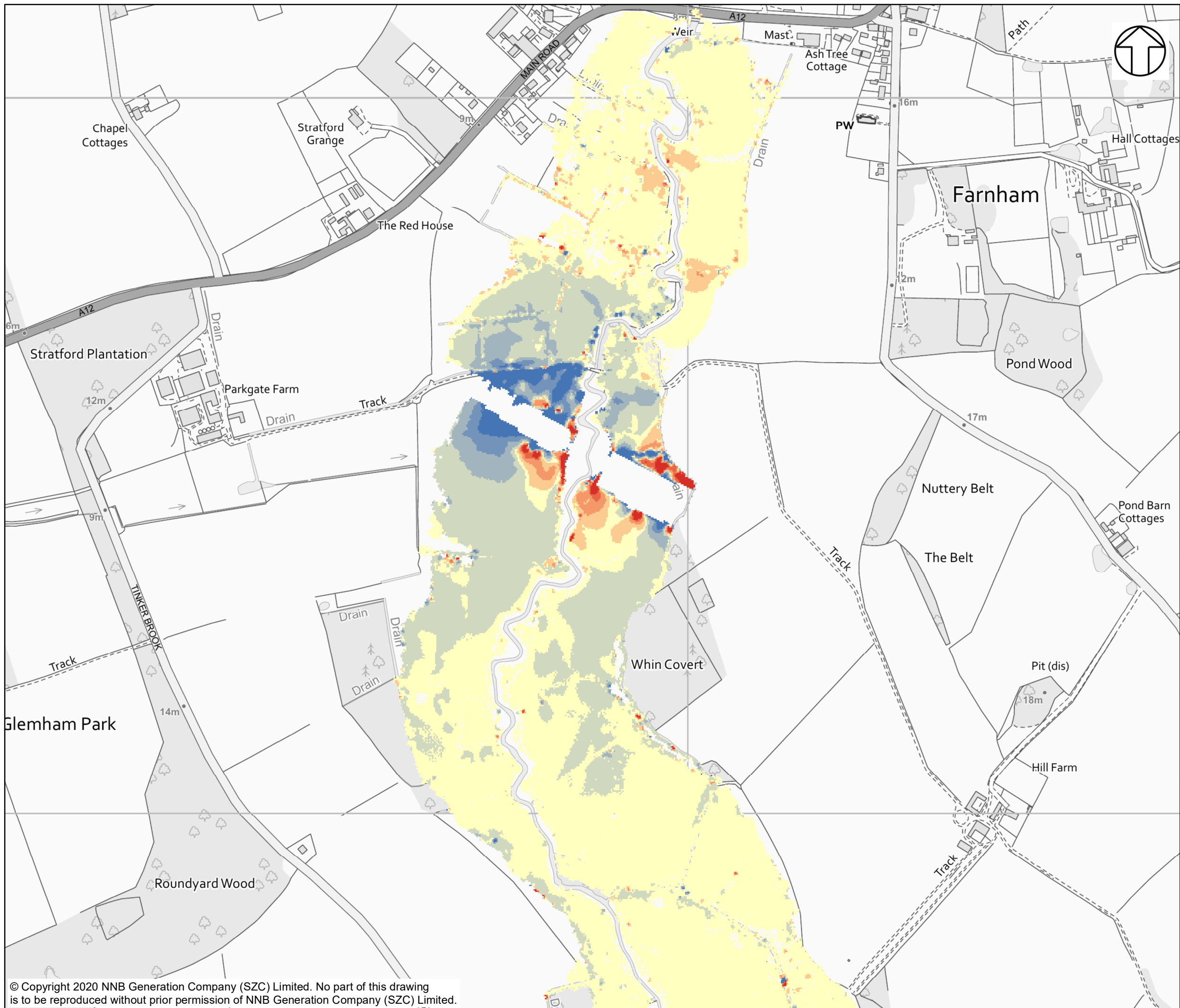
DOCUMENT:
 SIZEWELL C
 TWO VILLAGE BYPASS
 FLUVIAL MODEL RESULTS

DRAWING TITLE:
 FLUVIAL MODELLING DIFFERENCE BETWEEN
 BASELINE AND WITH SCHEME FLOOD VELOCITY
 FOR 1 IN 100-YEAR EVENT WITH 35% FOR
 CLIMATE CHANGE ALLOWANCE

DRAWING NO:
 FIGURE 78

DATE: FEB 2020 **DRAWN:** E.H. **SCALE:** 1:5,000 @A3



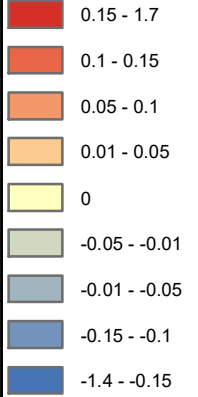


NOTES

KEY

DIFFERENCE 100 YEAR +65%CC

DIFFERENCE IN FLOOD VELOCITY (m/s)



NOT PROTECTIVELY MARKED

COPYRIGHT
 Reproduced from Ordnance Survey map with the permission of Ordnance Survey on behalf of the controller of Her Majesty's Stationary Office © Crown Copyright (2019). All Rights reserved. NNB GenCo 0100060408.

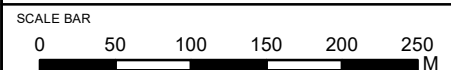


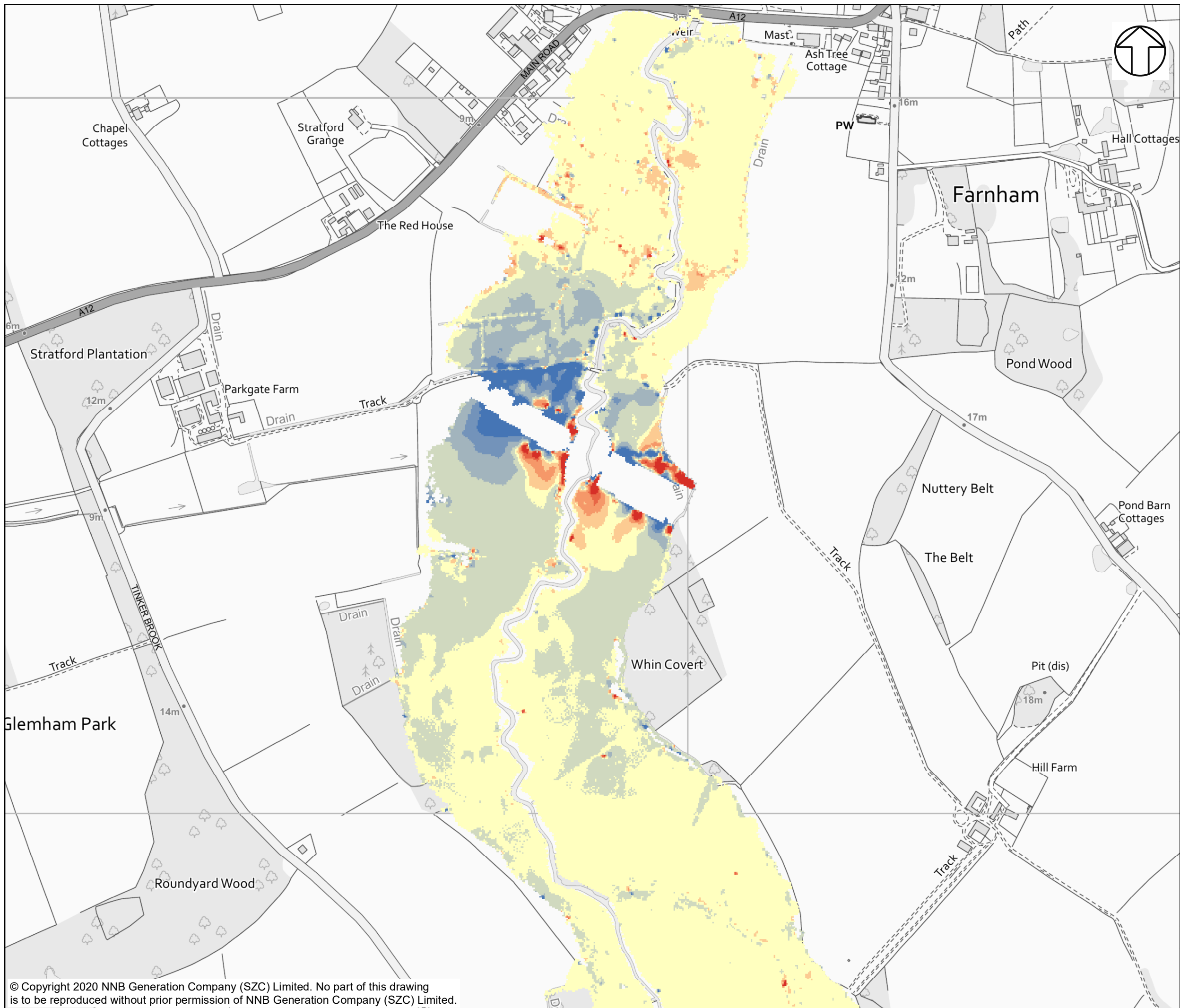
DOCUMENT:
 SIZEWELL C
 TWO VILLAGE BYPASS
 FLUVIAL MODEL RESULTS

DRAWING TITLE:
 FLUVIAL MODELLING DIFFERENCE BETWEEN
 BASELINE AND WITH SCHEME FLOOD VELOCITY
 FOR 1 IN 100-YEAR EVENT WITH 65% FOR
 CLIMATE CHANGE ALLOWANCE

DRAWING NO:
 FIGURE 79

DATE: FEB 2020 **DRAWN:** E.H. **SCALE:** 1:5,000 @A3



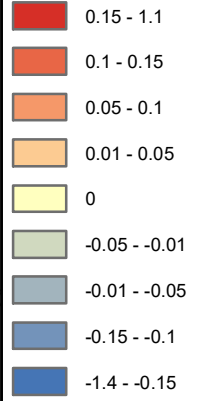


NOTES

KEY

DIFFERENCE 1000 YEAR PRESENT DAY

DIFFERENCE IN FLOOD VELOCITY (m/s)



NOT PROTECTIVELY MARKED

COPYRIGHT
 Reproduced from Ordnance Survey map with the permission of Ordnance Survey on behalf of the controller of Her Majesty's Stationary Office © Crown Copyright (2019). All Rights reserved. NNB GenCo 0100060408.



DOCUMENT:
 SIZEWELL C
 TWO VILLAGE BYPASS
 FLUVIAL MODEL RESULTS

DRAWING TITLE:
 FLUVIAL MODELLING DIFFERENCE BETWEEN
 BASELINE AND WITH SCHEME FLOOD VELOCITY
 FOR 1 IN 1,000-YEAR EVENT

DRAWING NO:
 FIGURE 80

DATE: FEB 2020 **DRAWN:** E.H. **SCALE:** 1:5,000 @A3

