



The Sizewell C Project

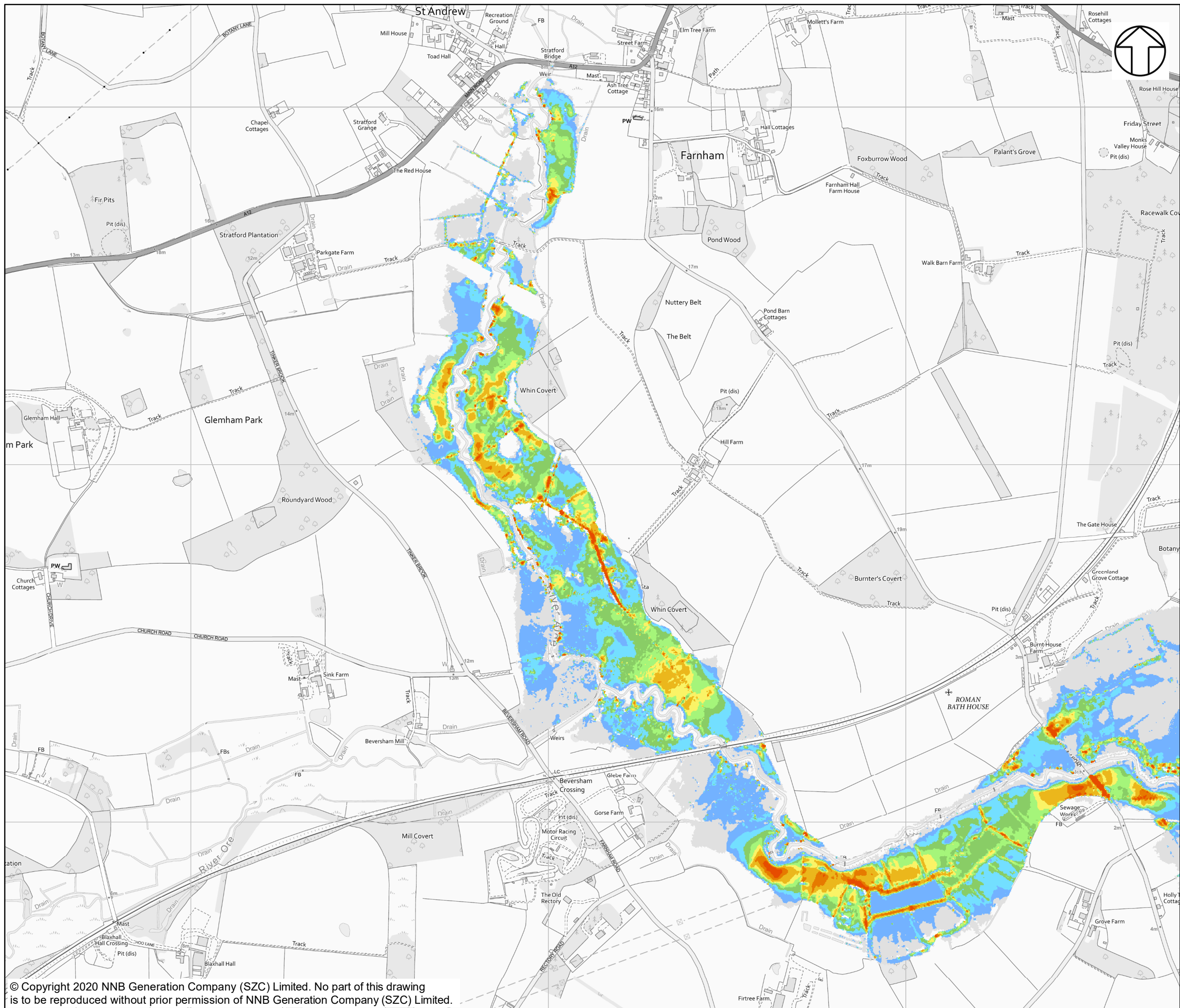
5.5 Two Village Bypass Flood Risk Assessment Figures 41 - 50

Revision: 1.0
Applicable Regulation: Regulation 5(2)(e)
PINS Reference Number: EN010012

May 2020

Planning Act 2008
Infrastructure Planning (Applications: Prescribed
Forms and Procedure) Regulations 2009



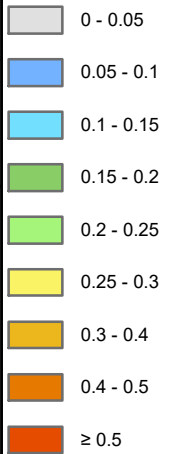


NOTES

KEY

WITH SCHEME 20YR PRESENT DAY

FLOOD VELOCITY (M/S)



NOT PROTECTIVELY MARKED

COPYRIGHT

Reproduced from Ordnance Survey map with the permission of Ordnance Survey on behalf of the controller of Her Majesty's Stationary Office © Crown Copyright (2019). All Rights reserved. NNB GenCo 0100060408.

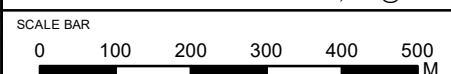


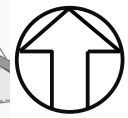
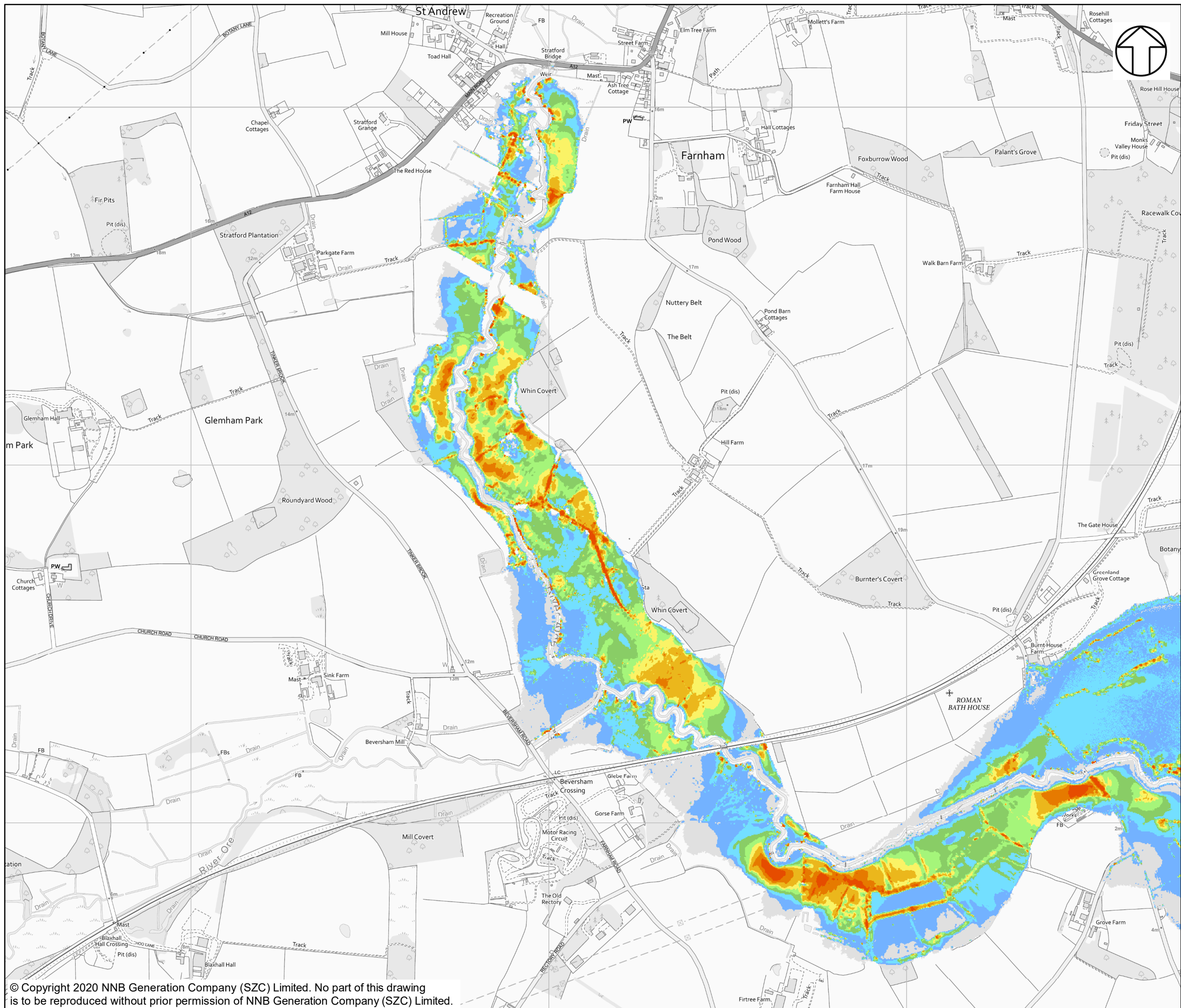
DOCUMENT:
SIZEWELL C
TWO VILLAGE BYPASS
FLUVIAL MODEL RESULTS

DRAWING TITLE:
FLUVIAL MODELLING WITH SCHEME FLOOD
VELOCITY FOR 1 IN 20-YEAR EVENT

DRAWING NO:
FIGURE 4 1

DATE: **JAN 2020** DRAWN: **P.S.** SCALE: **1:10,000 @A3**



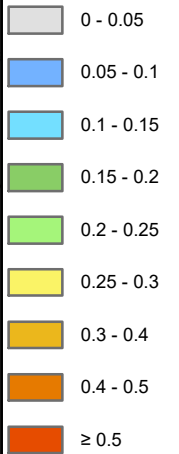


NOTES

KEY

WITH SCHEME 20YR +35CC

FLOOD VELOCITY (M/S)



NOT PROTECTIVELY MARKED

COPYRIGHT

Reproduced from Ordnance Survey map with the permission of Ordnance Survey on behalf of the controller of Her Majesty's Stationary Office © Crown Copyright (2019). All Rights reserved. NNB GenCo 0100060408.



DOCUMENT:

SIZEWELL C
TWO VILLAGE BYPASS
FLUVIAL MODEL RESULTS

DRAWING TITLE:

FLUVIAL MODELLING WITH SCHEME FLOOD VELOCITY FOR 1 IN 20-YEAR EVENT WITH 35% FOR CLIMATE CHANGE ALLOWANCE

DRAWING NO:

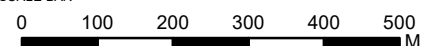
FIGURE 4 2

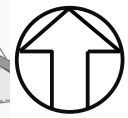
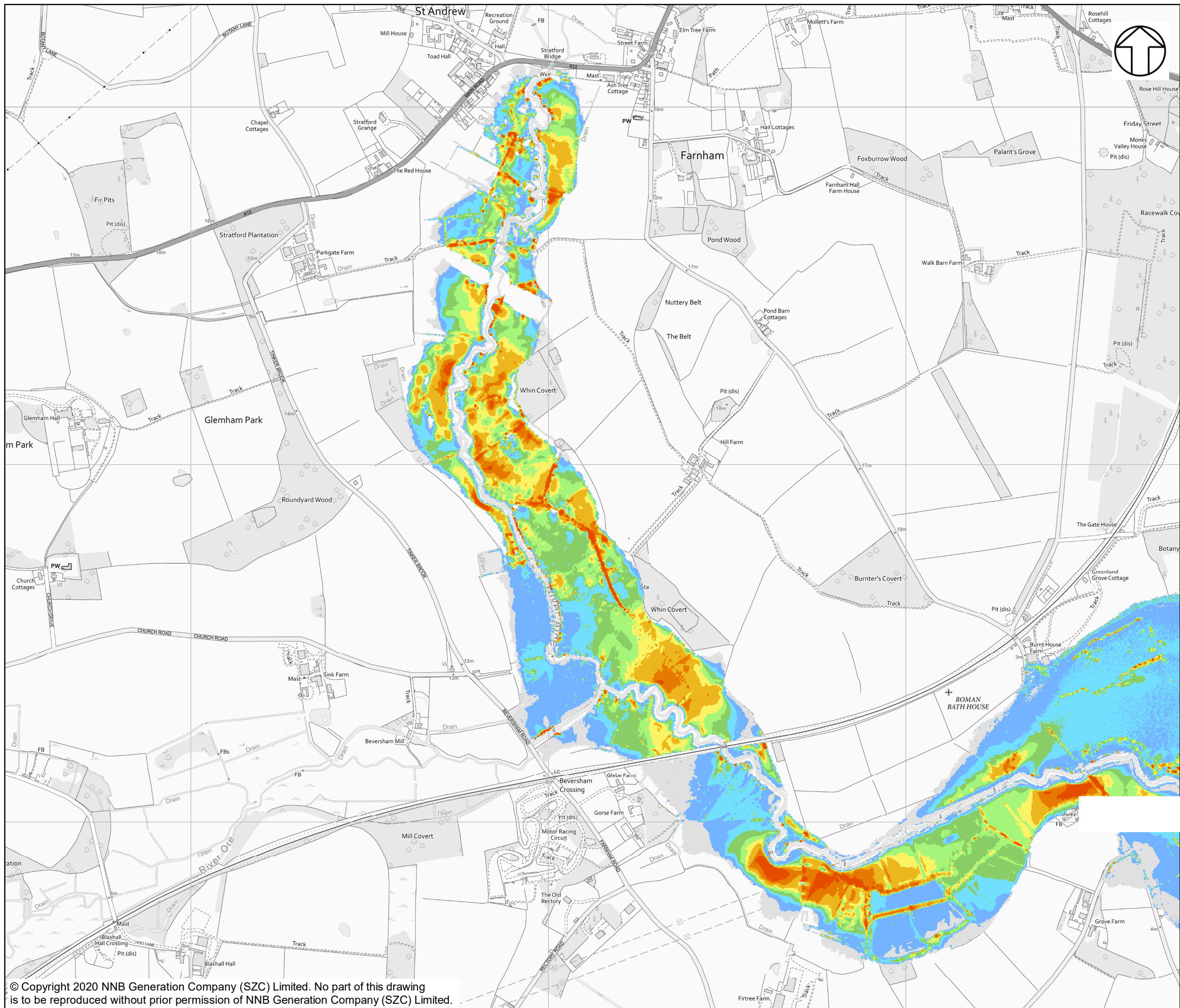
DATE: JAN 2020

DRAWN: P.S.

SCALE: 1:10,000 @A3

SCALE BAR



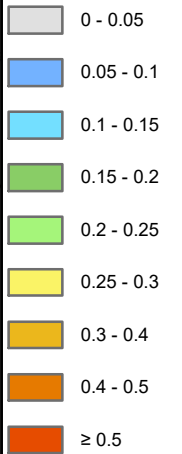


NOTES

KEY

WITH SCHEME 20YR +65CC

FLOOD VELOCITY (M/S)



NOT PROTECTIVELY MARKED

COPYRIGHT

Reproduced from Ordnance Survey map with the permission of Ordnance Survey on behalf of the controller of Her Majesty's Stationary Office © Crown Copyright (2019). All Rights reserved. NNB GenCo 0100060408.



DOCUMENT:

SIZEWELL C
TWO VILLAGE BYPASS
FLUVIAL MODEL RESULTS

DRAWING TITLE:

FLUVIAL MODELLING WITH SCHEME FLOOD VELOCITY FOR 1 IN 20-YEAR EVENT WITH 65% FOR CLIMATE CHANGE ALLOWANCE

DRAWING NO:

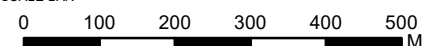
FIGURE 4 3

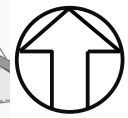
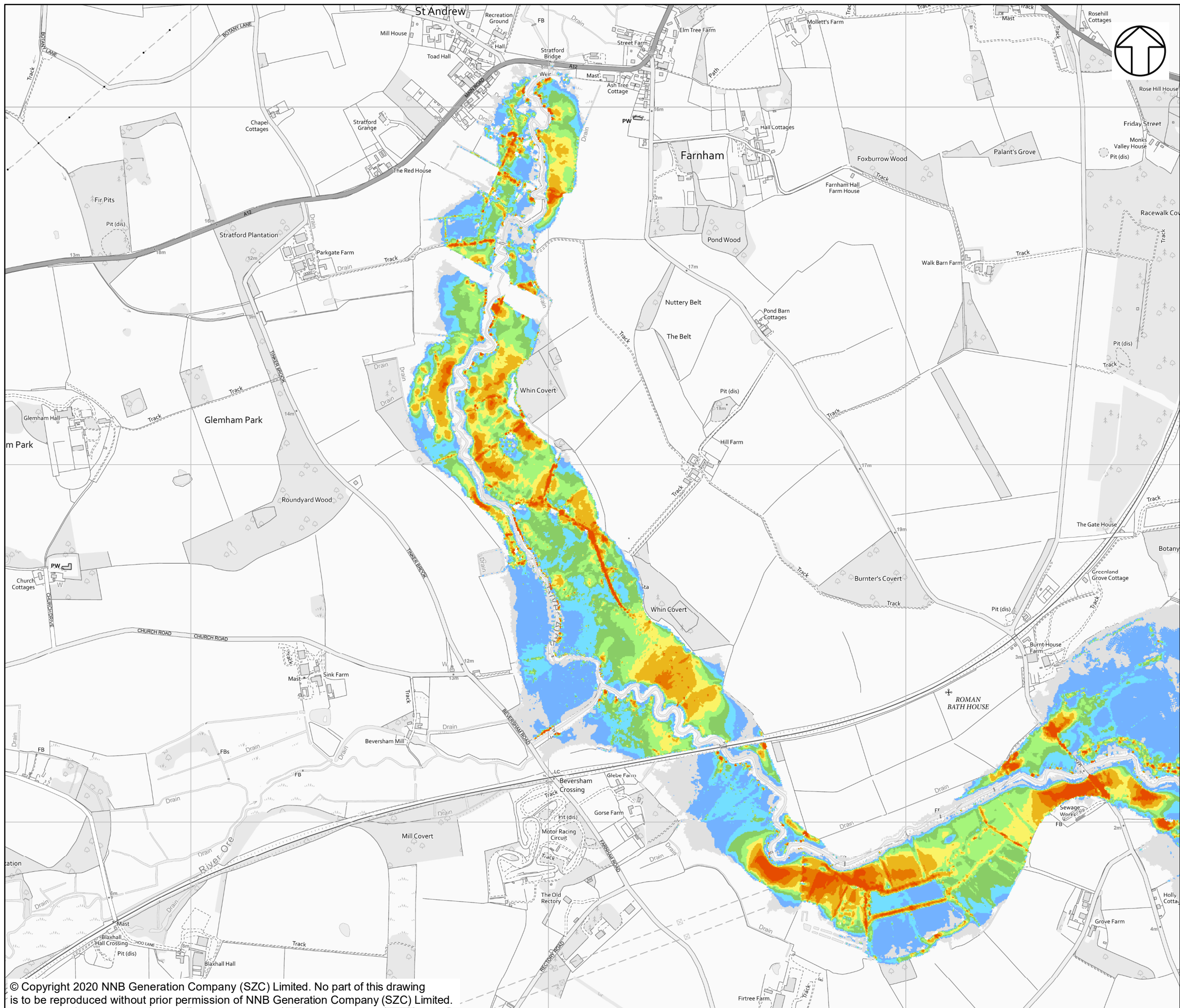
DATE: JAN 2020

DRAWN: P.S.

SCALE: 1:10,000 @A3

SCALE BAR



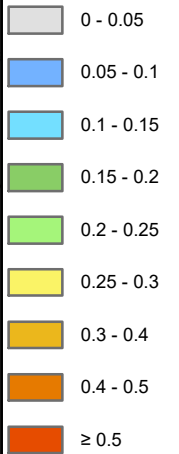


NOTES

KEY

WITH SCHEME 100 YEAR PRESENT DAY

FLOOD VELOCITY (M/S)



NOT PROTECTIVELY MARKED

COPYRIGHT

Reproduced from Ordnance Survey map with the permission of Ordnance Survey on behalf of the controller of Her Majesty's Stationary Office © Crown Copyright (2019). All Rights reserved. NNB GenCo 0100060408.

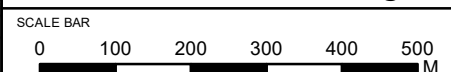


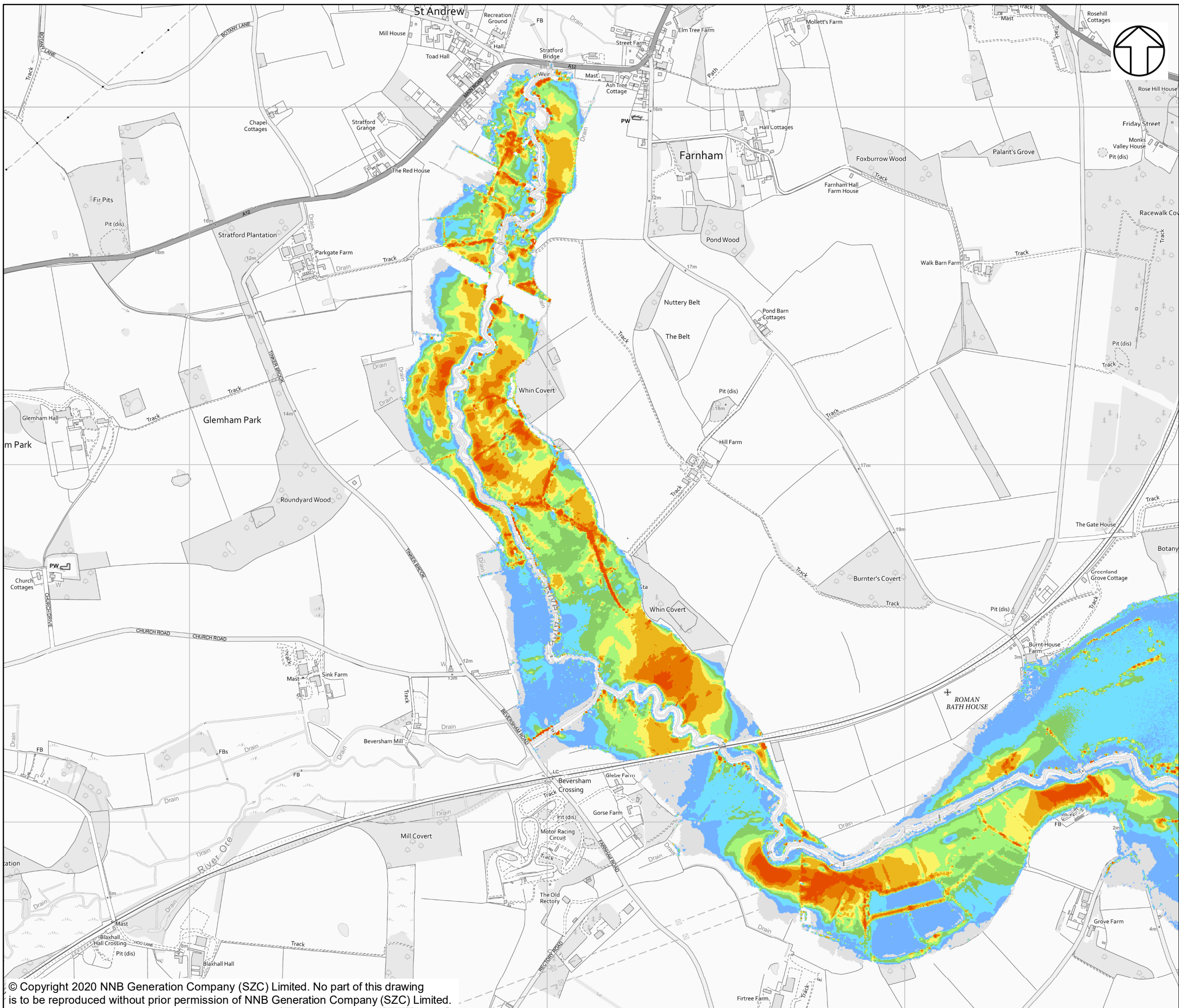
DOCUMENT:
 SIZEWELL C
 TWO VILLAGE BYPASS
 FLUVIAL MODEL RESULTS

DRAWING TITLE:
 FLUVIAL MODELLING WITH SCHEME FLOOD
 VELOCITY FOR 1 IN 100-YEAR EVENT

DRAWING NO:
FIGURE 44

DATE: JAN 2020 DRAWN: P.S. SCALE: 1:10,000 @A3





NOTES

KEY

WITH SCHEME 100 YEAR +35CC

FLOOD VELOCITY (M/S)

- 0 - 0.05
- 0.05 - 0.1
- 0.1 - 0.15
- 0.15 - 0.2
- 0.2 - 0.25
- 0.25 - 0.3
- 0.3 - 0.4
- 0.4 - 0.5
- ≥ 0.5

NOT PROTECTIVELY MARKED

COPYRIGHT

Reproduced from Ordnance Survey map with the permission of Ordnance Survey on behalf of the controller of Her Majesty's Stationery Office © Crown Copyright (2019). All Rights reserved. NNB GenCo 0100060408.

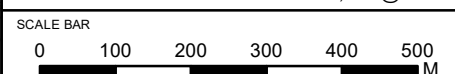


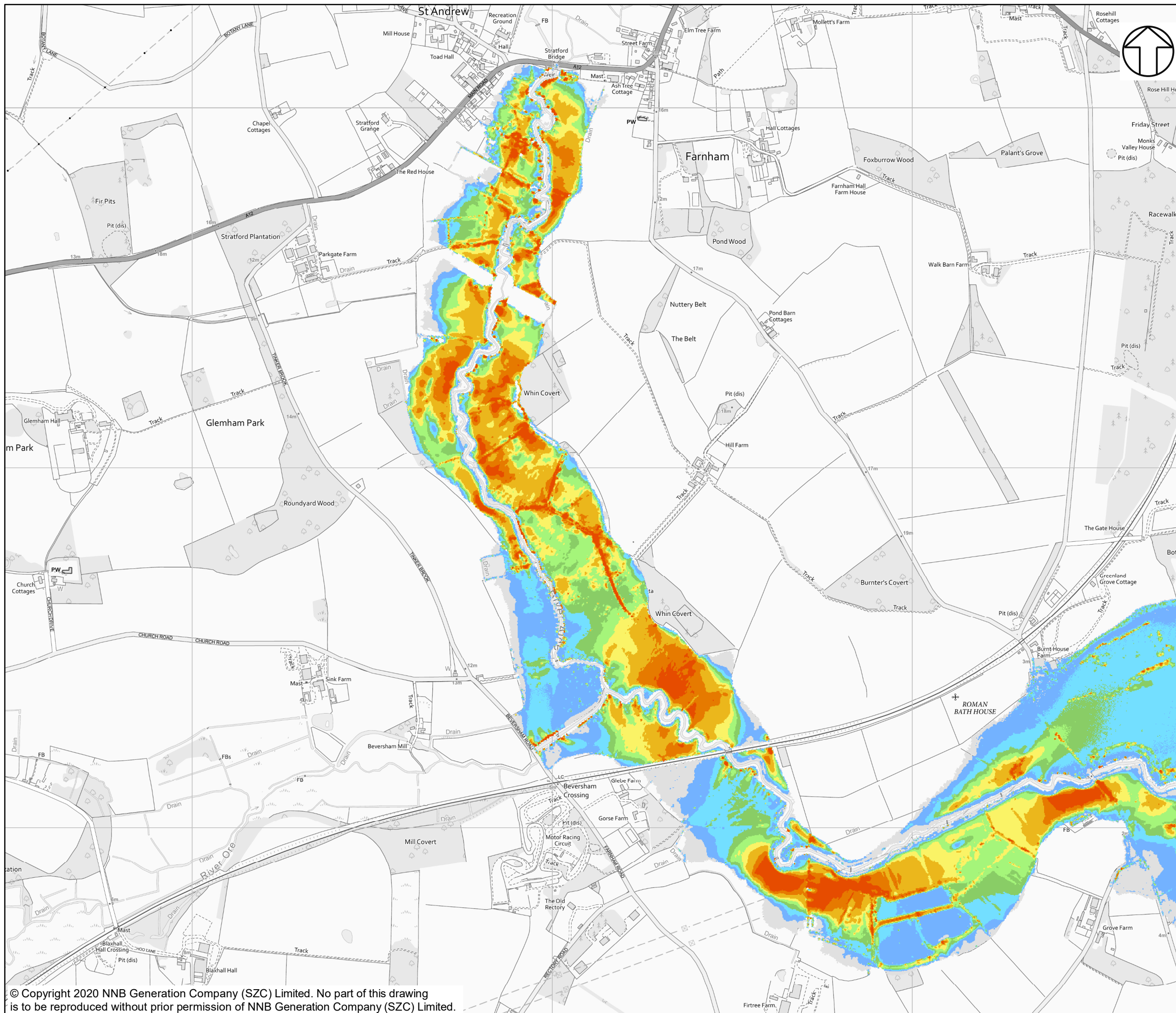
DOCUMENT:
SIZEWELL C
TWO VILLAGE BYPASS
FLUVIAL MODEL RESULTS

DRAWING TITLE:
FLUVIAL MODELLING WITH SCHEME FLOOD VELOCITY FOR 1 IN 100-YEAR EVENT WITH 35% FOR CLIMATE CHANGE ALLOWANCE

DRAWING NO:
FIGURE 45

DATE: **JAN 2020** DRAWN: **P.S.** SCALE: **1:10,000 @A3**



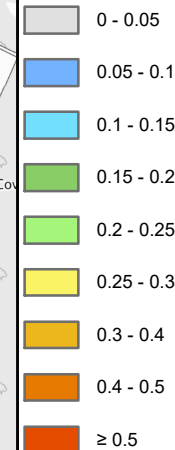


NOTES

KEY

WITH SCHEME 100 YEAR +65CC

FLOOD VELOCITY (M/S)



NOT PROTECTIVELY MARKED

COPYRIGHT

Reproduced from Ordnance Survey map with the permission of Ordnance Survey on behalf of the controller of Her Majesty's Stationery Office © Crown Copyright (2019). All Rights reserved. NNB GenCo 0100060408.



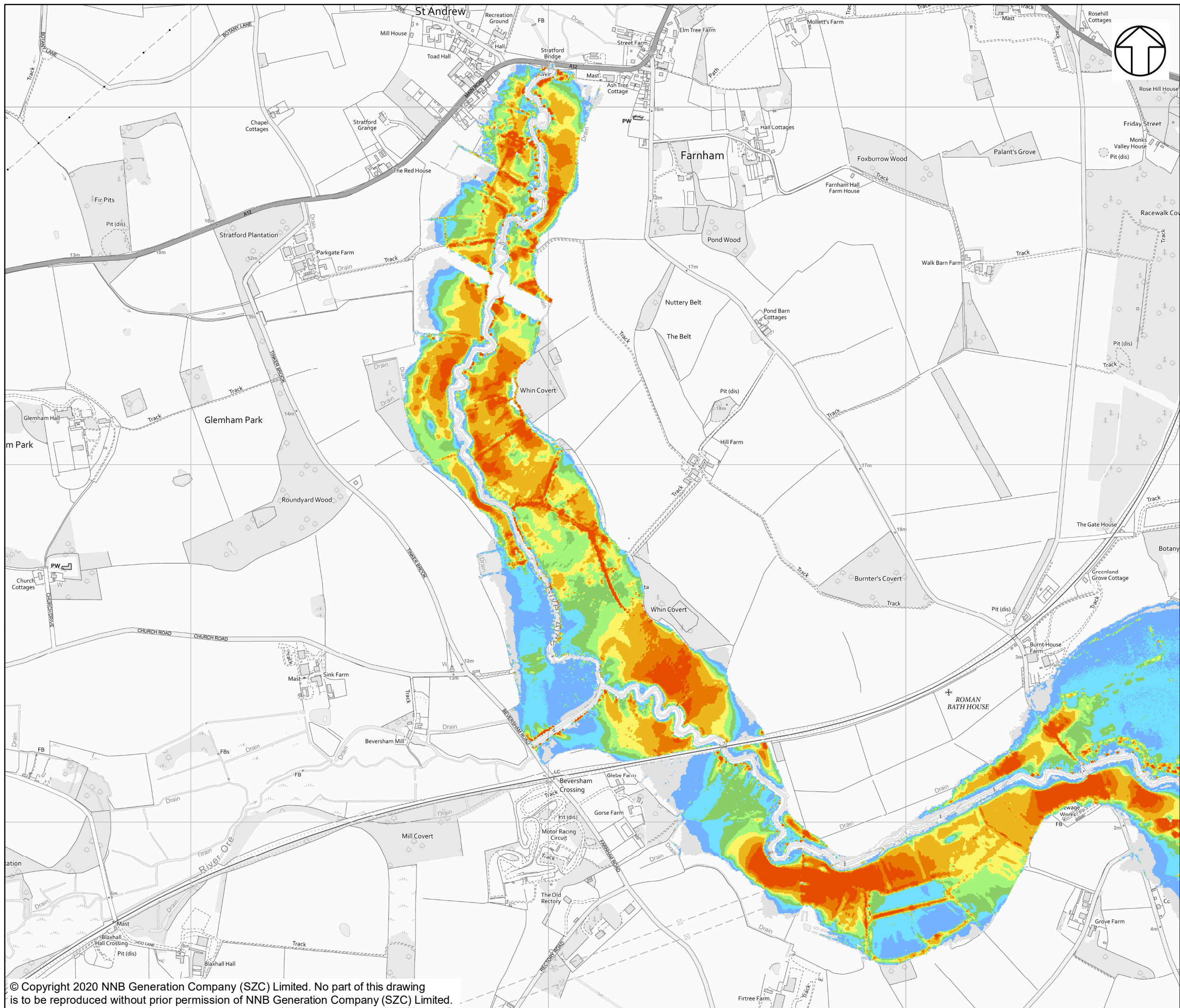
DOCUMENT:
 SIZEWELL C
 TWO VILLAGE BYPASS
 FLUVIAL MODEL RESULTS

DRAWING TITLE:
 FLUVIAL MODELLING WITH SCHEME FLOOD
 VELOCITY FOR 1 IN 100-YEAR EVENT WITH 65%
 FOR CLIMATE CHANGE ALLOWANCE

DRAWING NO:
FIGURE 4 6

DATE: JAN 2020 **DRAWN:** P.S. **SCALE:** 1:10,000 @A3



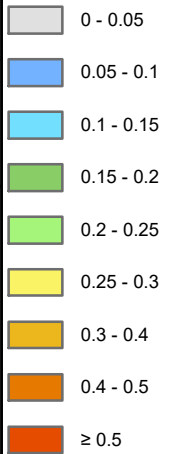


NOTES

KEY

WITH SCHEME 1000 YEAR PRESENT DAY

FLOOD VELOCITY (M/S)



NOT PROTECTIVELY MARKED

COPYRIGHT

Reproduced from Ordnance Survey map with the permission of Ordnance Survey on behalf of the controller of Her Majesty's Stationery Office © Crown Copyright (2019). All Rights reserved. NNB GenCo 0100060408.

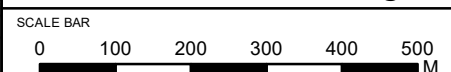


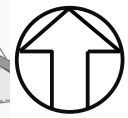
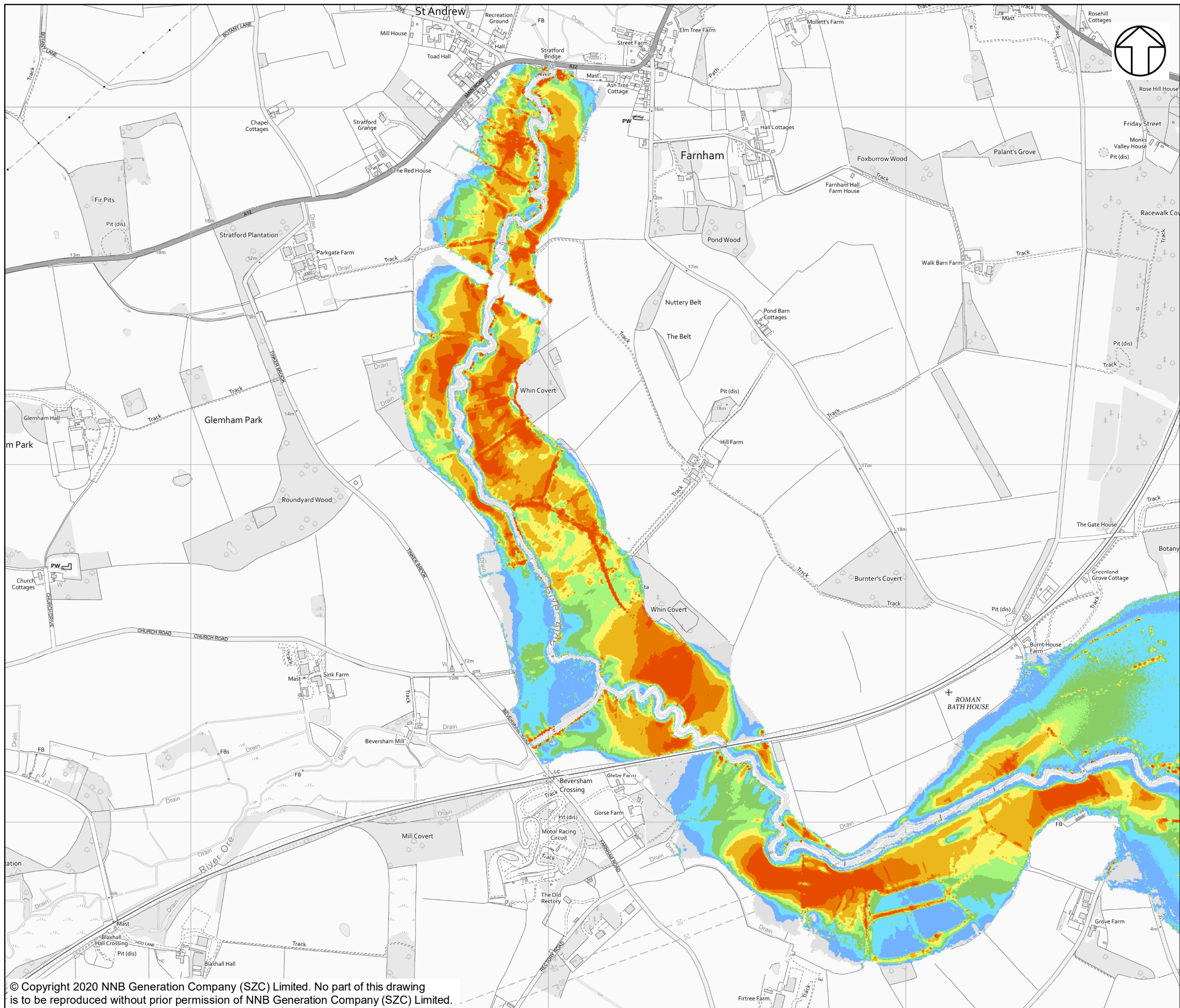
DOCUMENT:
 SIZEWELL C
 TWO VILLAGE BYPASS
 FLUVIAL MODEL RESULTS

DRAWING TITLE:
 FLUVIAL MODELLING WITH SCHEME FLOOD
 VELOCITY FOR 1 IN 1,000-YEAR EVENT

DRAWING NO:
FIGURE 47

DATE: JAN 2020 DRAWN: P.S. SCALE: 1:10,000 @A3



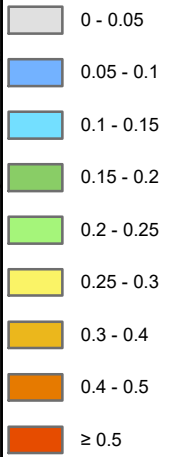


NOTES

KEY

WITH SCHEME 1000 YEAR +35CC

FLOOD VELOCITY (M/S)



NOT PROTECTIVELY MARKED

COPYRIGHT

Reproduced from Ordnance Survey map with the permission of Ordnance Survey on behalf of the controller of Her Majesty's Stationery Office © Crown Copyright (2019). All Rights reserved. NNB GenCo 0100060408.

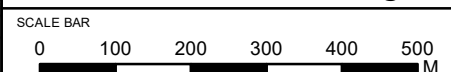


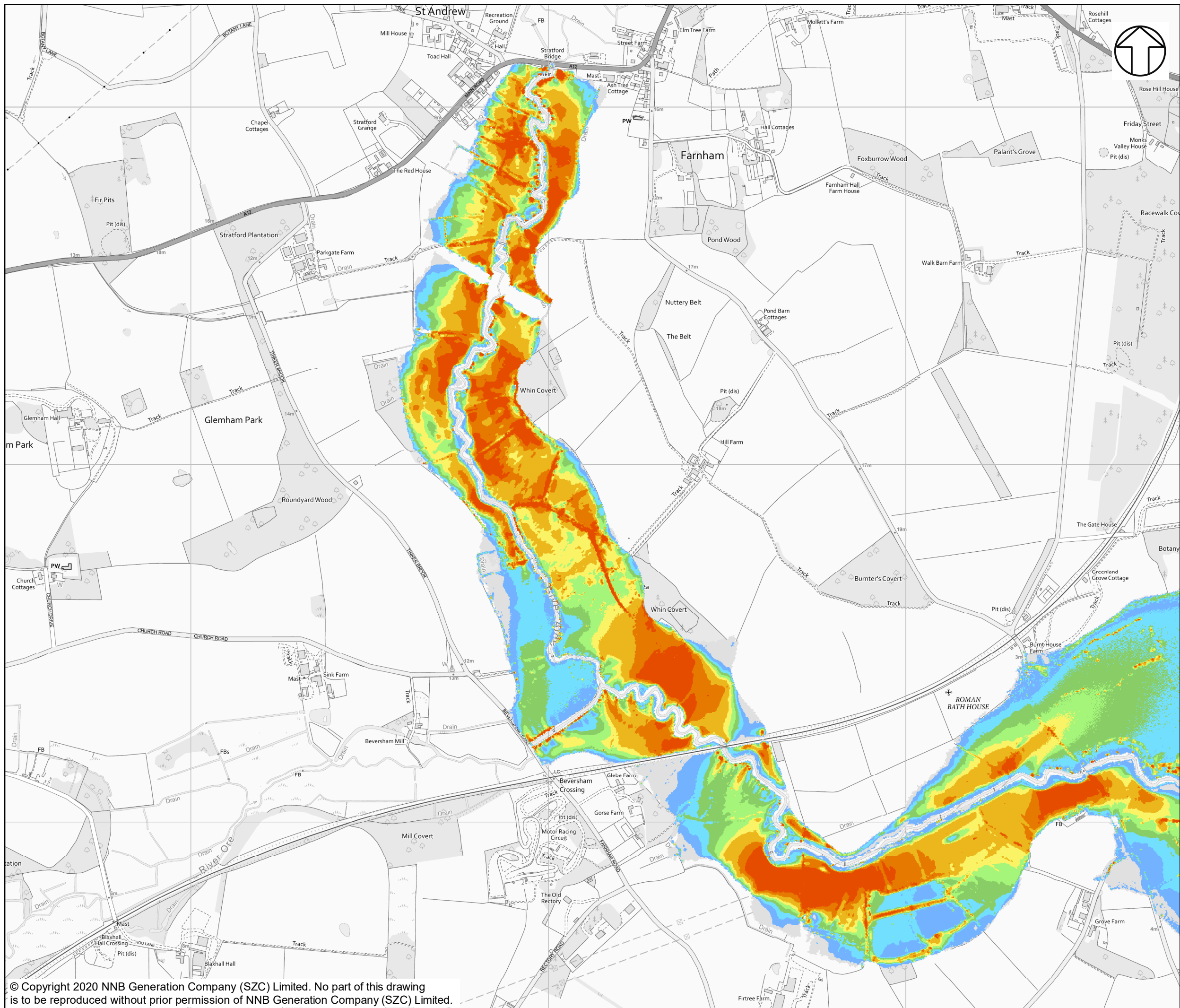
DOCUMENT:
SIZEWELL C
TWO VILLAGE BYPASS
FLUVIAL MODEL RESULTS

DRAWING TITLE:
FLUVIAL MODELLING WITH SCHEME FLOOD
VELOCITY FOR 1 IN 1,000-YEAR EVENT WITH 35%
FOR CLIMATE CHANGE ALLOWANCE

DRAWING NO:
FIGURE 48

DATE: **JAN 2020** DRAWN: **P.S.** SCALE: **1:10,000 @A3**



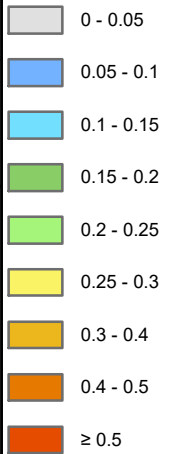


NOTES

KEY

WITH SCHEME 1000 YEAR +65CC

FLOOD VELOCITY (M/S)



NOT PROTECTIVELY MARKED

COPYRIGHT

Reproduced from Ordnance Survey map with the permission of Ordnance Survey on behalf of the controller of Her Majesty's Stationery Office © Crown Copyright (2019). All Rights reserved. NNB GenCo 0100060408.

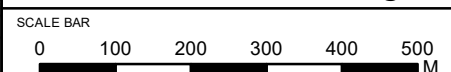


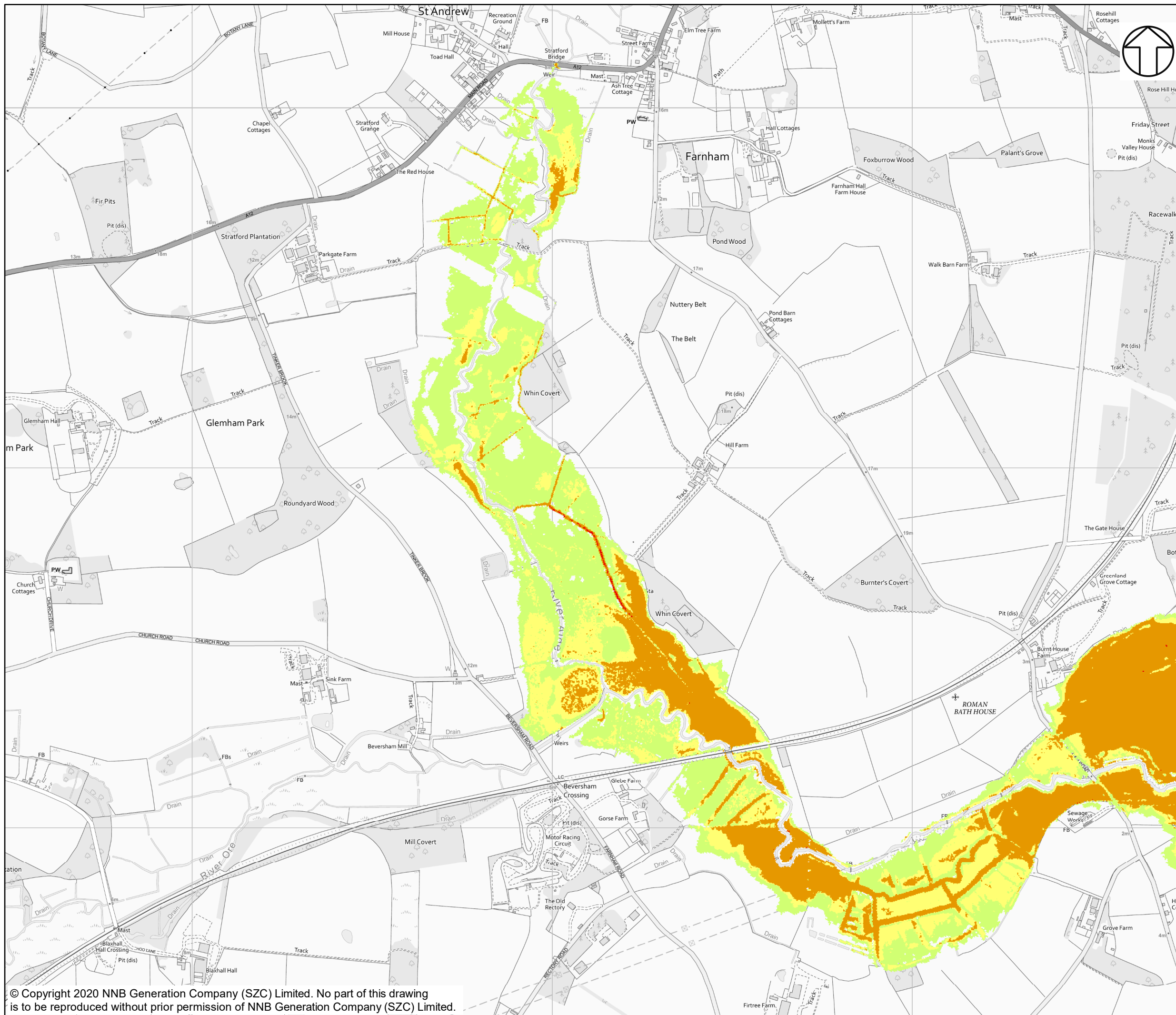
DOCUMENT:
 SIZEWELL C
 TWO VILLAGE BYPASS
 FLUVIAL MODEL RESULTS

DRAWING TITLE:
 FLUVIAL MODELLING WITH SCHEME FLOOD
 VELOCITY FOR 1 IN 1,000-YEAR EVENT WITH 65%
 FOR CLIMATE CHANGE ALLOWANCE

DRAWING NO:
FIGURE 49

DATE: JAN 2020 **DRAWN:** P.S. **SCALE:** 1:10,000 @A3





NOTES

KEY

WITH SCHEME 20 YEAR PRESENT DAY

FLOOD HAZARD

- LESS THAN 0.75 (LOW HAZARD)
- BETWEEN 0.75 AND 1.25 (DANGER FOR SOME)
- BETWEEN 1.25 AND 2.0 (DANGER FOR MOST)
- GREATER THAN 2.0 (DANGER FOR ALL)

NOT PROTECTIVELY MARKED

COPYRIGHT

Reproduced from Ordnance Survey map with the permission of Ordnance Survey on behalf of the controller of Her Majesty's Stationery Office © Crown Copyright (2019). All Rights reserved. NNB GenCo 0100060408.



DOCUMENT:
 SIZEWELL C
 TWO VILLAGE BYPASS
 FLUVIAL MODEL RESULTS

DRAWING TITLE:
 FLUVIAL MODELLING WITH SCHEME FLOOD
 HAZARD FOR 1 IN 20-YEAR EVENT

DRAWING NO:
FIGURE 50

DATE: JAN 2020 DRAWN: P.S. SCALE: 1:10,000 @A3

