



The Sizewell C Project

2.5 Main Development Site Cooling Water Pumphouse & Associated Buildings (Unit 2) Plans For Approval

May 2020

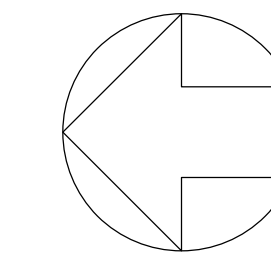
Planning Act 2008
Infrastructure Planning (Applications: Prescribed Forms and Procedure) Regulations 2009

Revision: 1.0
Applicable Regulation: Regulation 5(2)(o)
PINS Reference Number: EN010012



Main Development Site, Cooling Water Pumphouse & Associated Buildings Plans (Unit 2) – For Approval

Drawing Number	Revision	Drawing Title	Scale	Sheet Size
Unit 2: Cooling Water Pumphouse / Forebay / Outfall Pond Building / Filtering Debris Recovery Pit				
SZC-SZ0701-XX-000-DRW-100124	01	Roof Plan	1:200	A0
SZC-SZ0701-XX-000-DRW-100125	01	Elevations	1:200	A0
Unit 2: Fire-Fighting Water Distribution Building				
SZC-SZ0701-XX-000-DRW-100127	01	Roof Plan & Elevations	1:200	A1



NOTES:

- Definitions:
FFL - Finished Floor Level
AOD - Above Ordnance Datum
- Platform level is defined as +7.30m AOD, an additional step of +0.20m locates the finished floor level of all buildings at +7.50m AOD.
- All dimensions are indicated to a tolerance of 0.5m.
- An additional 5m may be required to account for roof plant and machinery which may protrude above the stated roof height, see Sizewell C Design and Access Statement Chapter 7 for details.

KEY:

- | | |
|---|--------------------------------|
| Vertical Enclosure | Horizontal Enclosure |
| Wall | Roof |
| 1 Concrete / render finishes | 7 Roofing |
| 1.1 In-situ concrete | 7.1 Sedum roof |
| 1.2 Pre-cast concrete | 7.2 Ballast |
| 1.3 Render finish | 7.3 Standing seam roof |
| | 7.4 Concrete roof |
| 2 Cladding | 8 Roofing Accessories |
| 2.1 Aluminium standing seam | 8.1 Roof light |
| 2.2 Aluminium panels | 8.2 Roof vents and hatches |
| 2.3 Aluminium fins | 8.3 Metal cappings and copings |
| 2.4 Profiled steel panels | 8.4 Paving |
| 2.5 Flat steel panels | 8.5 PVs and solar panels |
| 2.6 Fibre cement cladding | 8.6 Timber decking |
| 2.7 Glass reinforced plastic | 8.7 Roof Plant |
| 2.8 Glassfibre reinforced concrete panels | 8.8 Steel Grid |
| 2.9 Anodised Aluminium panels | |
| 3 Glazing / translucent materials | |
| 3.1 Glazed curtain wall | |
| 3.2 Frameless glazing | |
| 3.3 Framed glazing | |
| 3.4 Opaque glazed spandrel panel | |
| 4 External wall features | |
| 4.1 Aluminium trims, copings and casings | |
| 4.2 Aluminium louvres | |
| 4.3 Steel louvres | |
| 4.4 Aluminium brise-soleil | |
| 4.5 Glass brise-soleil | |
| 4.6 Mesh expanded metal panels | |
| 4.7 Fencing | |
| 4.8 Barbed tape | |
| 4.9 Retractable steel shutters | |
| 4.10 Wall vents and hatches | |
| 4.11 Rainwater pipe and hopper | |
| 5 Doors | |
| 5.1 Metal door | |
| 5.2 Metal louvre door | |
| 5.3 Glazed door | |
| 5.4 Access gates | |
| 6 Window / metalwork accessories | |
| 6.1 External fabric blinds | |
| 6.2 Cavity venetian blinds | |
| 6.3 Glazed balustrade | |
| 6.4 Metal stairs and ladders | |
| 6.5 Steel guardrail | |

01	FEB 20	GA	GA	DCO SUBMISSION	SZC Co
REVISION	DATE	DRAWN	CHECKED	REASONS FOR REVISION / COMMENTS	APPROVED

NOT PROTECTIVELY MARKED

COPYRIGHT:
 Reproduced from Ordnance Survey map with the permission of Ordnance Survey on behalf of the controller of Her Majesty's Stationery Office © Crown copyright (2019).
 All Rights reserved. NNB GenCo Licence: 0100060408



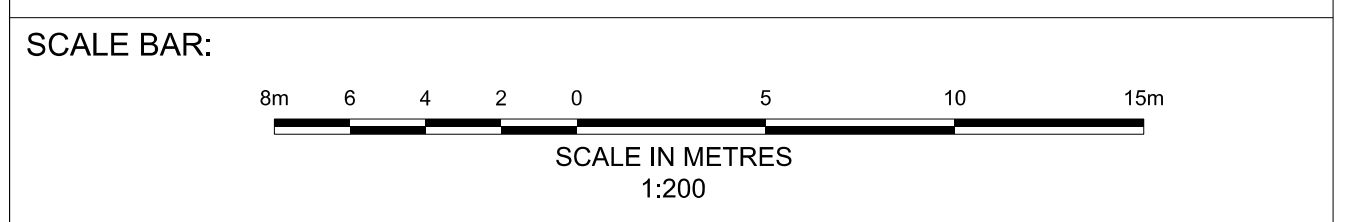
PROJECT:
SIZEWELL C

DOCUMENT:
APPLICATION DRAWING - FOR APPROVAL REGULATION 5(2)(o)

DRAWING TITLE:
**MAIN DEVELOPMENT SITE
 UNIT 2: COOLING WATER PUMPHOUSE /
 FOREBAY / OUTFALL POND BLDG / FILTERING
 DEBRIS RECOVERY PIT
 ROOF PLAN**

DRAWING NO: SZC-SZ0701-XX-000-DRW-100124	REVISION: 01
--	------------------------

DATE: FEB 2020	DRAWN: CH	SCALE: 1:200 @ A0
--------------------------	---------------------	-----------------------------



4
100125

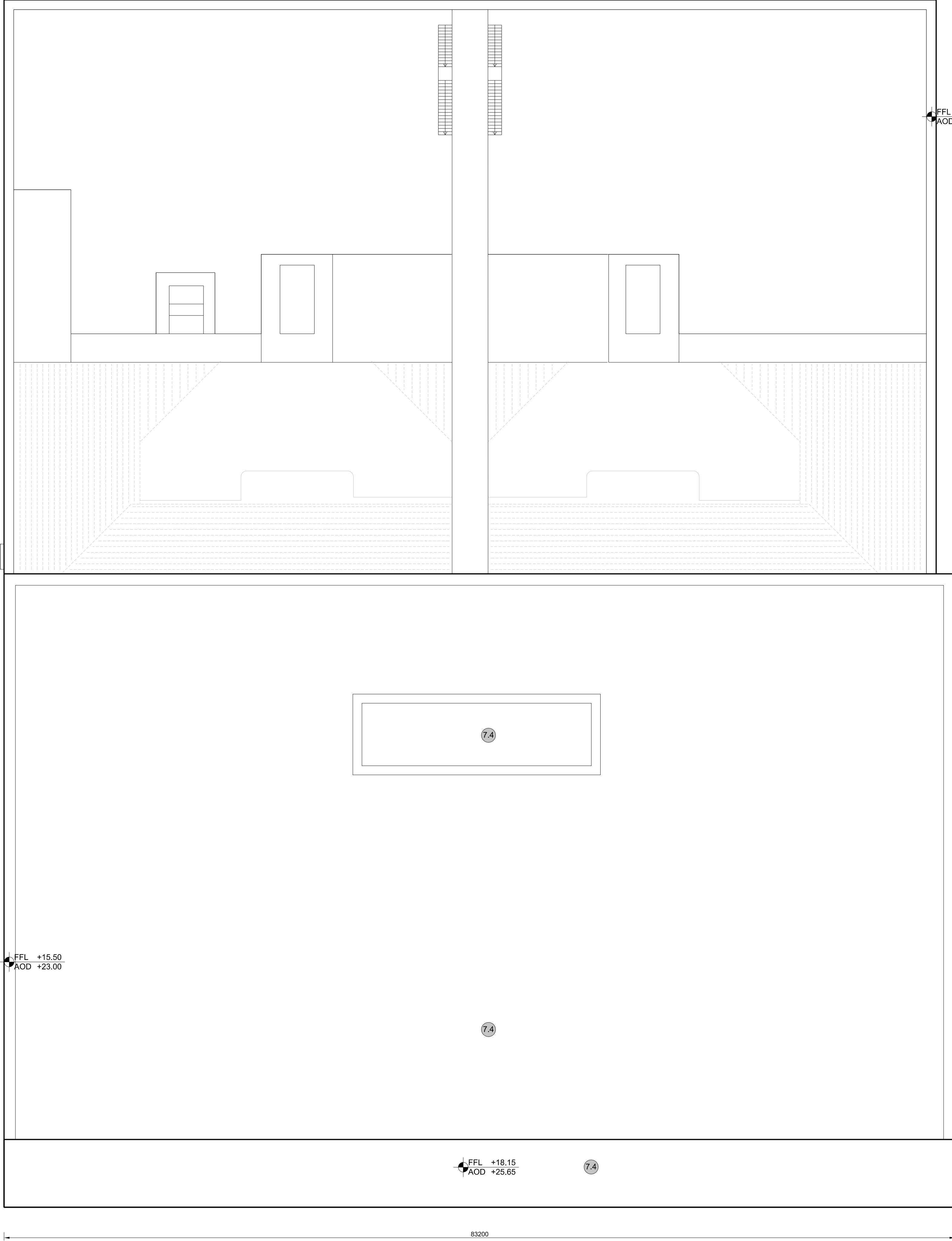
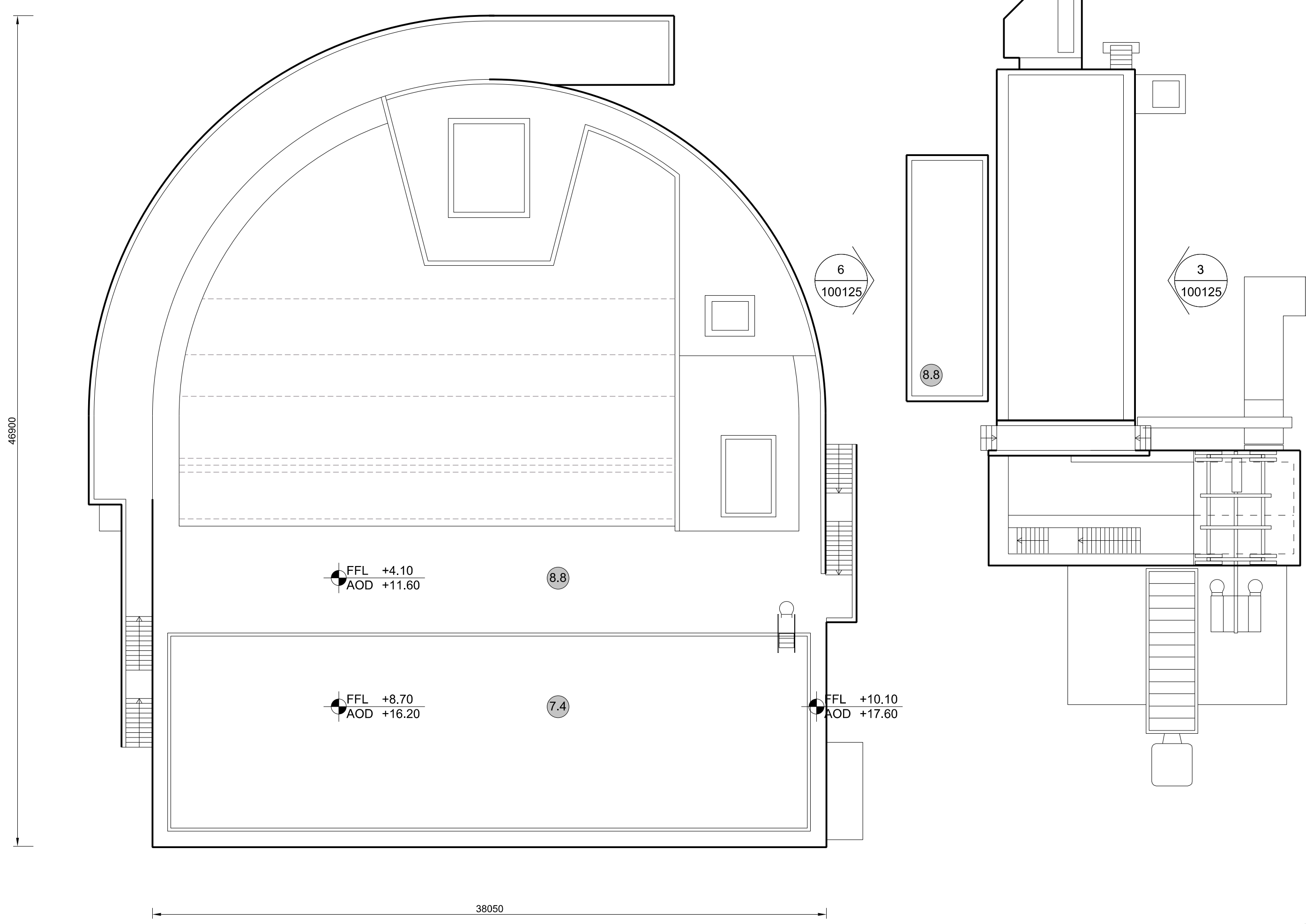
2
100125

3
100125

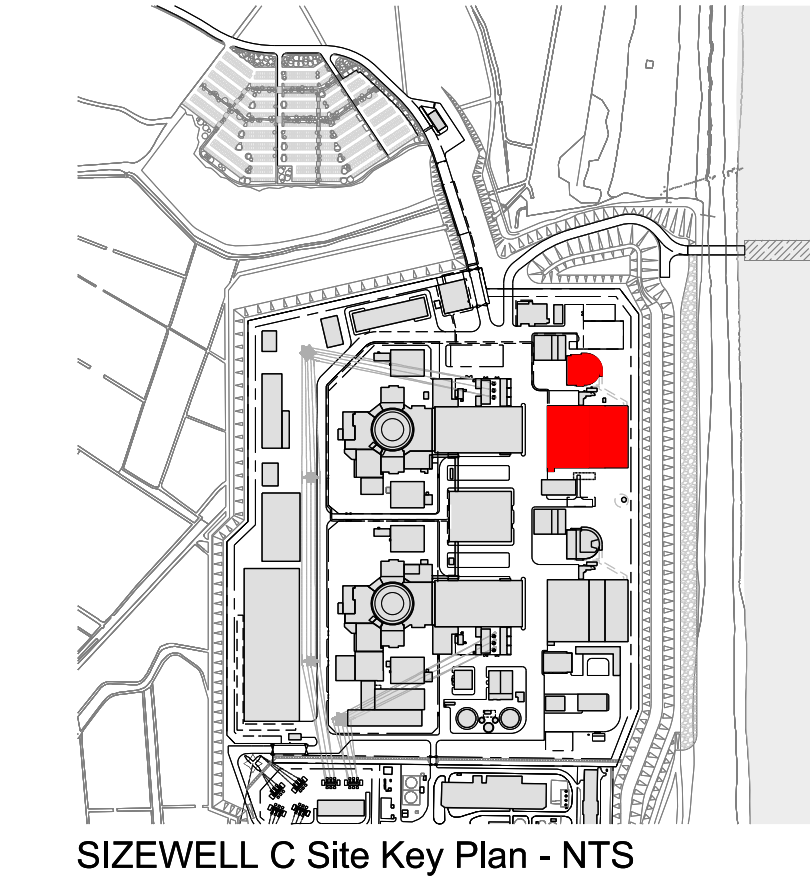
6
100125

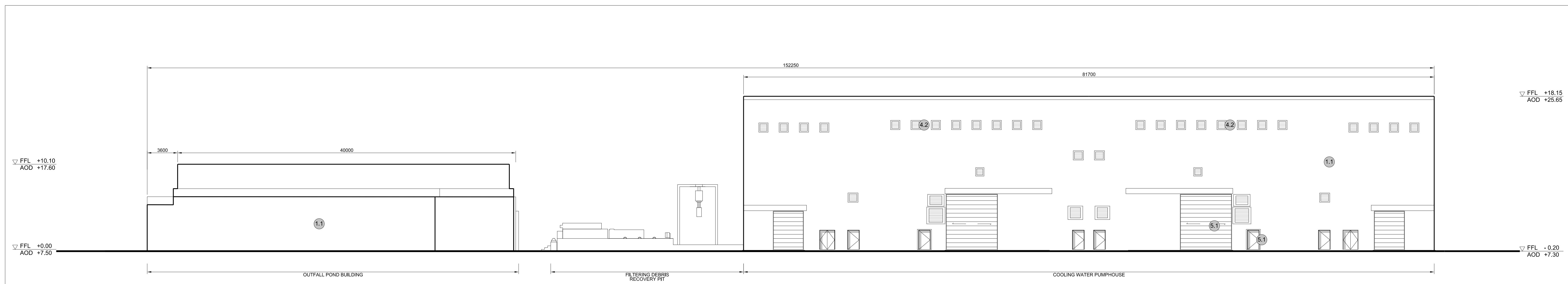
5
100125

1
100125

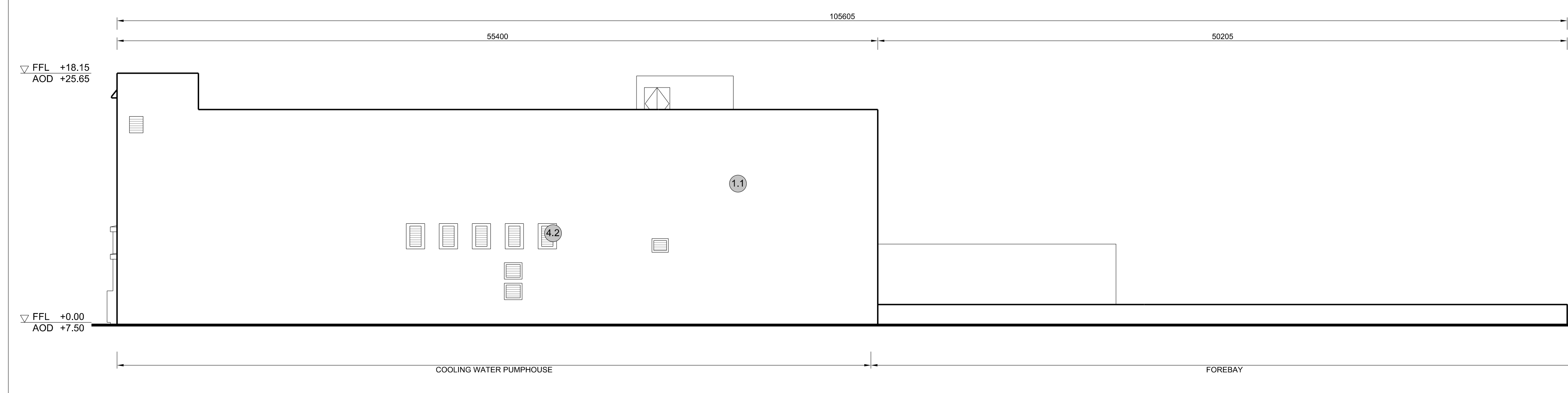


4 **ROOF PLAN**
SCALE 1:200

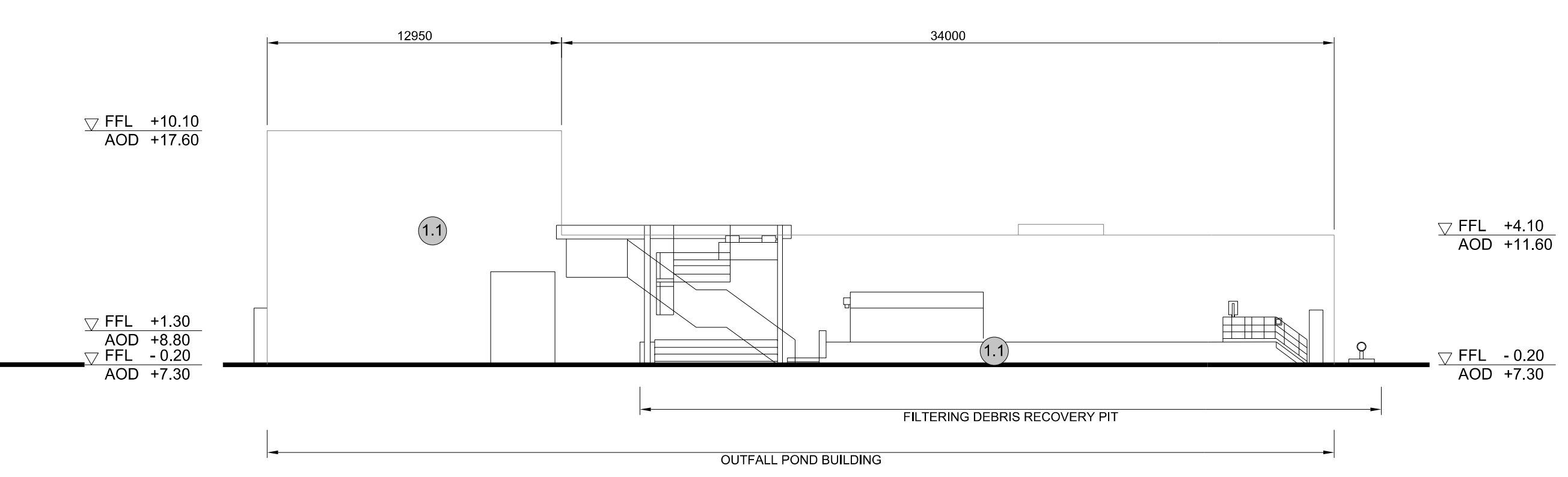




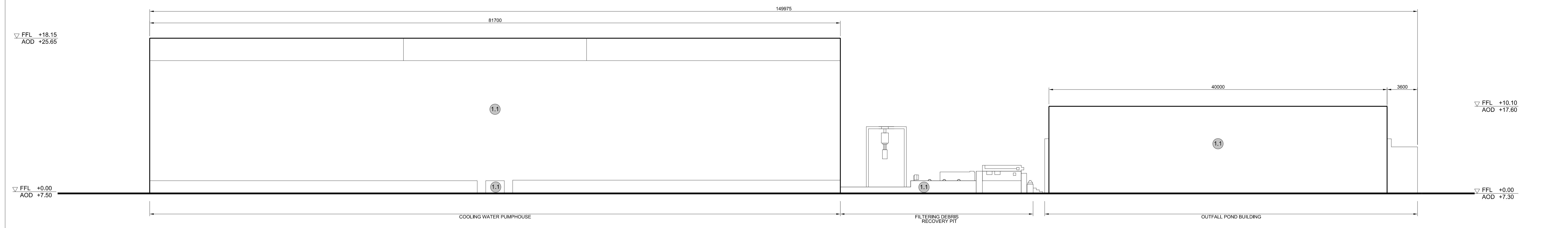
1 WEST ELEVATION
SCALE 1:200



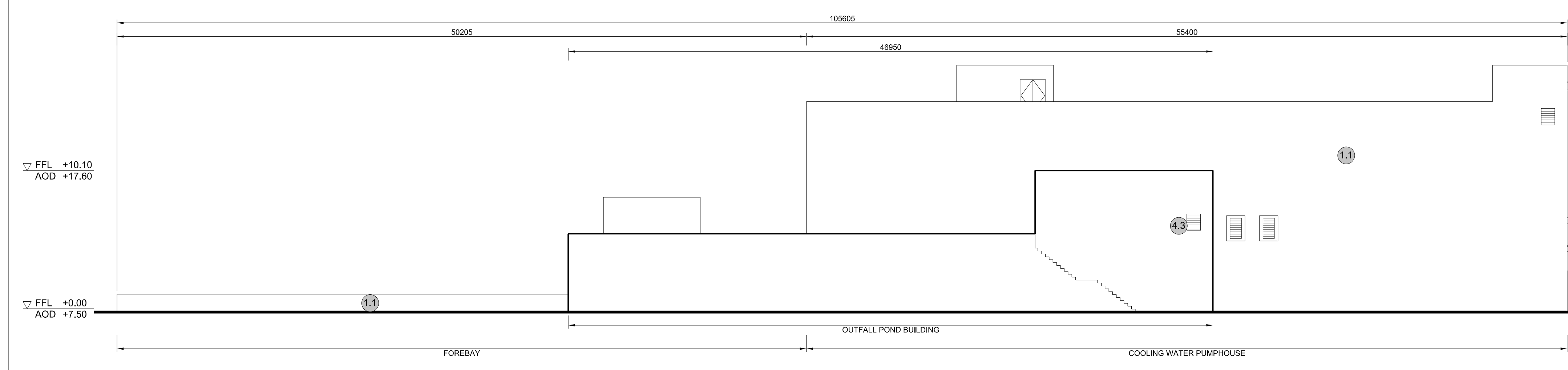
2 SOUTH ELEVATION
SCALE 1:200



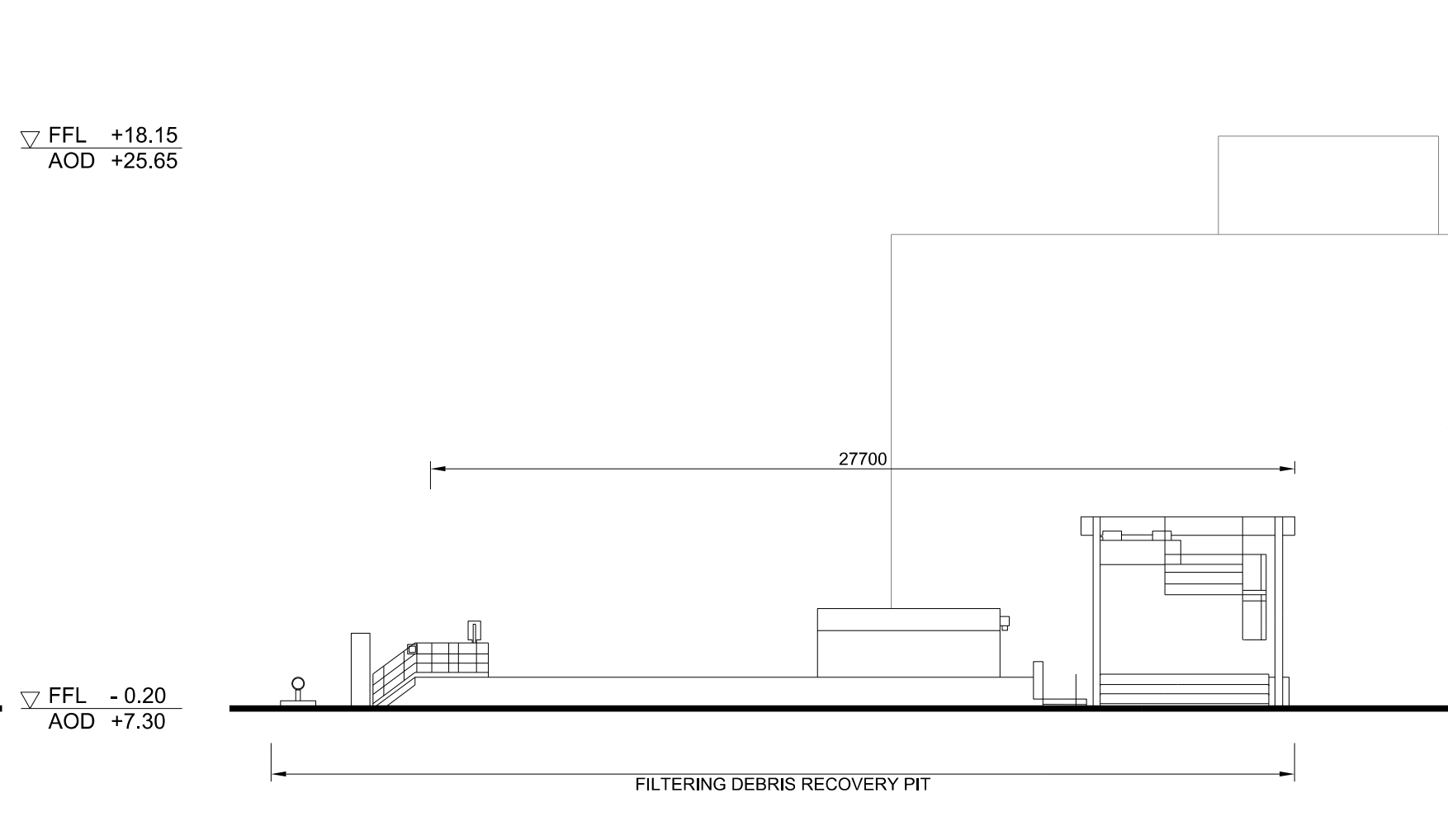
3 SOUTH ELEVATION FOR FILTERING DEBRIS RECOVERY PIT
SCALE 1:200



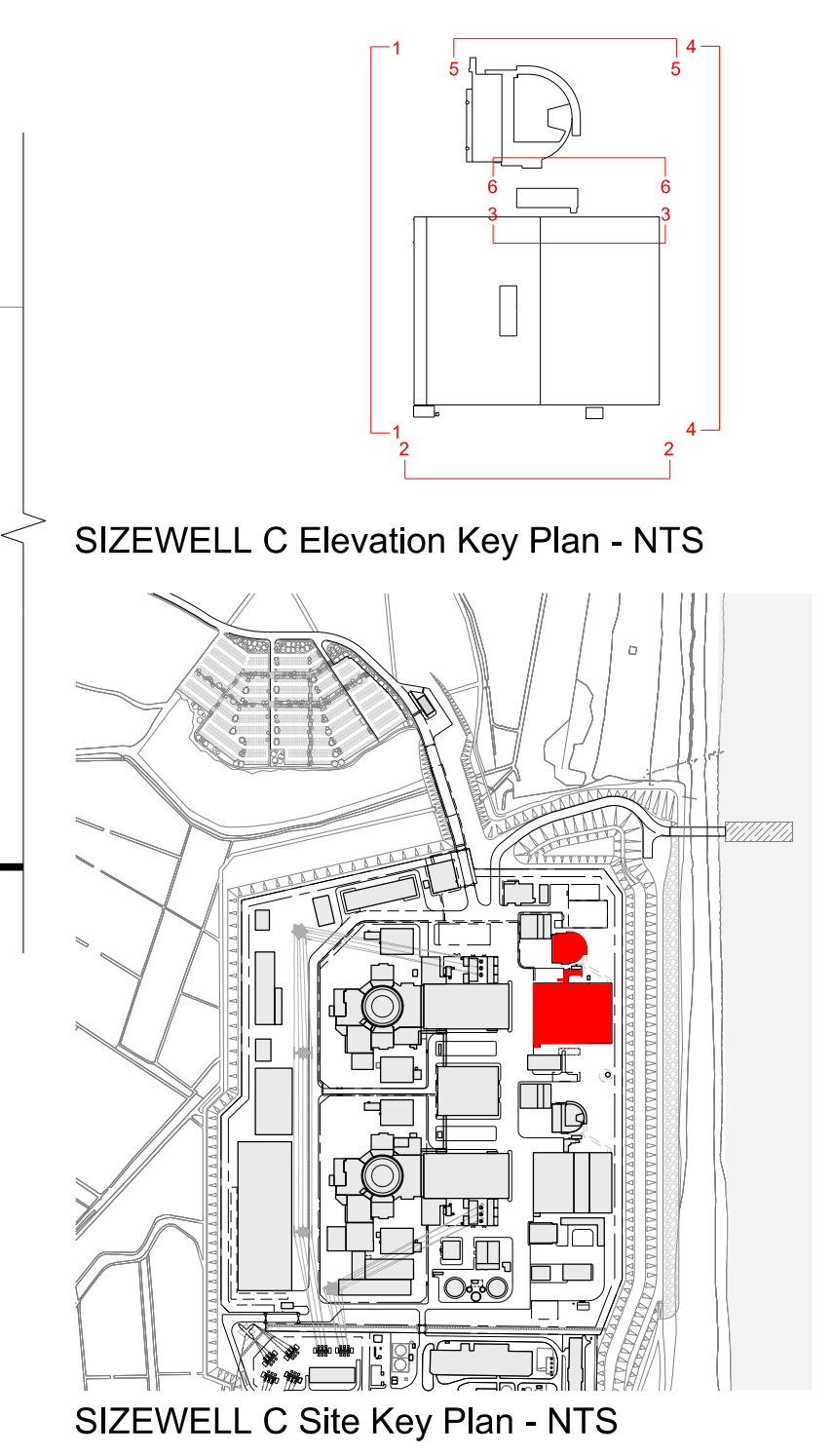
4 EAST ELEVATION
SCALE 1:200



5 NORTH ELEVATION
SCALE 1:200



6 NORTH ELEVATION FOR FILTERING DEBRIS RECOVERY PIT
SCALE 1:200



NOTES:

- Definitions:
FFL - Finished Floor Level
AOD - Above Ordnance Datum
- Platform level is defined as +7.30m AOD, an additional step of +0.20m locates the finished floor level of all buildings at +7.50m AOD.
- All dimensions are indicated to a tolerance of 0.5m.
- External projections including telecommunications infrastructure (including aerials and satellites), access structures and safety measures (including ladders and handrails), mechanical plant, utilities infrastructure (including solar panels) and minor architectural features (including gutters and lighting) are not shown and may be added subsequently.

- KEY:**
- | | |
|---|--------------------------------|
| Vertical Enclosure | Horizontal Enclosure |
| Wall | Roof |
| 1 Concrete / render finishes | 7 Roofing |
| 1.1 In-situ concrete | 7.1 Sedum roof |
| 1.2 Pre-cast concrete | 7.2 Ballast |
| 1.3 Render finish | 7.3 Standing seam roof |
| | 7.4 Concrete roof |
| Cladding | Roofing Accessories |
| 2.1 Aluminium standing seam | 8.1 Roof light |
| 2.2 Aluminium panels | 8.2 Roof vents and hatches |
| 2.3 Aluminium fins | 8.3 Metal cappings and copings |
| 2.4 Profiled steel panels | 8.4 Paving |
| 2.5 Flat steel panels | 8.5 PVs and solar panels |
| 2.6 Fibre cement cladding | 8.6 Timber decking |
| 2.7 Glass reinforced plastic | 8.7 Roof Plant |
| 2.8 Glassfibre reinforced concrete panels | 8.8 Steel Grid |
| 2.9 Anodised Aluminium panels | |
| Glazing / translucent materials | |
| 3.1 Glazed curtain wall | |
| 3.2 Frameless glazing | |
| 3.3 Framed glazing | |
| 3.4 Opaque glazed spandrel panel | |
| External wall features | |
| 4.1 Aluminium trims, copings and casings | |
| 4.2 Aluminium louvres | |
| 4.3 Steel louvres | |
| 4.4 Aluminium brise-soleil | |
| 4.5 Glass brise-soleil | |
| 4.6 Mesh expanded metal panels | |
| 4.7 Fencing | |
| 4.8 Barbed tape | |
| 4.9 Retractable steel shutters | |
| 4.10 Wall vents and hatches | |
| 4.11 Rainwater pipe and hopper | |
| Doors | |
| 5.1 Metal door | |
| 5.2 Metal louvre door | |
| 5.3 Glazed door | |
| 5.4 Access gates | |
| Window / metalwork accessories | |
| 6.1 External fabric blinds | |
| 6.2 Cavity venetian blinds | |
| 6.3 Glazed balustrade | |
| 6.4 Metal stairs and ladders | |
| 6.5 Steel guardrail | |

REVISION	DATE	DRAWN	CHECKED	DCO SUBMISSION	REASONS FOR REVISION / COMMENTS	SZC Co	APPROVED
01	FEB 20	GA	GA	DCO SUBMISSION			

NOT PROTECTIVELY MARKED

COPYRIGHT:
Reproduced from Ordnance Survey map with the permission of Ordnance Survey on behalf of the controller of Her Majesty's Stationery Office © Crown copyright (2019).
All Rights reserved. NNB GenCo Licence: 0100060408



PROJECT:
SIZEWELL C

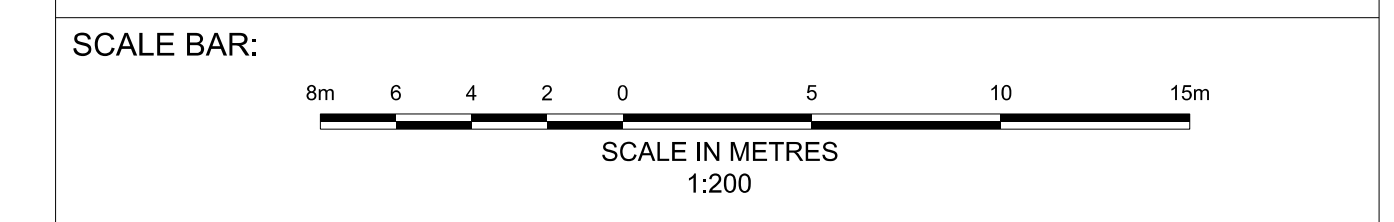
DOCUMENT:
APPLICATION DRAWING - FOR APPROVAL REGULATION 5(2)(o)

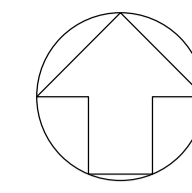
DRAWING TITLE:
MAIN DEVELOPMENT SITE UNIT 2: COOLING WATER PUMPHOUSE / FOREBAY / OUTFALL POND BLDG / FILTERING DEBRIS RECOVERY PIT ELEVATIONS

DRAWING NO:
SZC-SZ0701-XX-000-DRW-100125

REVISION:
01

DATE: **FEB 2020** DRAWN: **CH** SCALE: **1:200 @ A0**





- NOTES:**
- Definitions: FFL - Finished Floor Level
AOD - Above Ordnance Datum
 - Platform level is defined as +7.30m AOD, an additional step of +0.20m locates the finished floor level of all buildings at +7.50m AOD.
 - All dimensions are indicated to a tolerance of 0.5m.
 - An additional 5m may be required to account for roof plant and machinery which may protrude above stated roof height, see Sizewell C Design and Access Statement for details.

- KEY:**
- Vertical Enclosure Wall**
- | | |
|-------------------------------------|-----------------------|
| 1 Concrete / render finishes | 5 Doors |
| 1.1 In-situ concrete | 5.1 Metal door |
| 1.2 Pre-cast concrete | 5.2 Metal louvre door |
| 1.3 Render finish | 5.3 Glazed door |
| | 5.4 Access gates |
- 2 Cladding**
- | | |
|---|---|
| 2.1 Aluminium standing seam | 6 Window / metalwork accessories |
| 2.2 Aluminium panels | 6.1 External fabric blinds |
| 2.3 Aluminium fins | 6.2 Cavity venetian blinds |
| 2.4 Profiled steel panels | 6.3 Glazed balustrade |
| 2.5 Flat steel panels | 6.4 Metal stairs and ladders |
| 2.6 Fibre cement cladding | 6.5 Steel guardrail |
| 2.7 Glass reinforced plastic | |
| 2.8 Glassfibre reinforced concrete panels | |
| 2.9 Anodised Aluminium panels | |
- 3 Glazing / translucent materials**
- | | |
|----------------------------------|----------------------------------|
| 3.1 Glazed curtain wall | Horizontal Enclosure Roof |
| 3.2 Frameless glazing | 7 Roofing |
| 3.3 Framed glazing | 7.1 Sedum roof |
| 3.4 Opaque glazed spandrel panel | 7.2 Ballast |
| | 7.3 Standing seam roof |
| | 7.4 Concrete roof |
- 4 External wall features**
- | | |
|--|--------------------------------|
| 4.1 Aluminium trims, copings and casings | 8 Roofing Accessories |
| 4.2 Aluminium louvres | 8.1 Roof light |
| 4.3 Steel louvres | 8.2 Roof vents and hatches |
| 4.4 Aluminium brise-soleil | 8.3 Metal cappings and copings |
| 4.5 Glass brise-soleil | 8.4 Paving |
| 4.6 Mesh expanded metal panels | 8.5 PVs and solar panels |
| 4.7 Fencing | 8.6 Timber decking |
| 4.8 Barbed tape | 8.7 Roof Plant |
| 4.9 Retractable steel shutters | 8.8 Steel Grid |
| 4.10 Wall vents and hatches | |
| 4.11 Rainwater pipe and hopper | |

REVISION	DATE	DRAWN/CHECKED	REASONS FOR REVISION / COMMENTS	APPROVED
01	FEB 20	GA	DCO SUBMISSION	SZC Co

NOT PROTECTIVELY MARKED

COPYRIGHT:
 Reproduced from Ordnance Survey map with the permission of Ordnance Survey on behalf of the controller of Her Majesty's Stationery Office © Crown copyright (2019). All Rights reserved. NNB GenCo Licence: 0100060408



PROJECT:
 SIZEWELL C

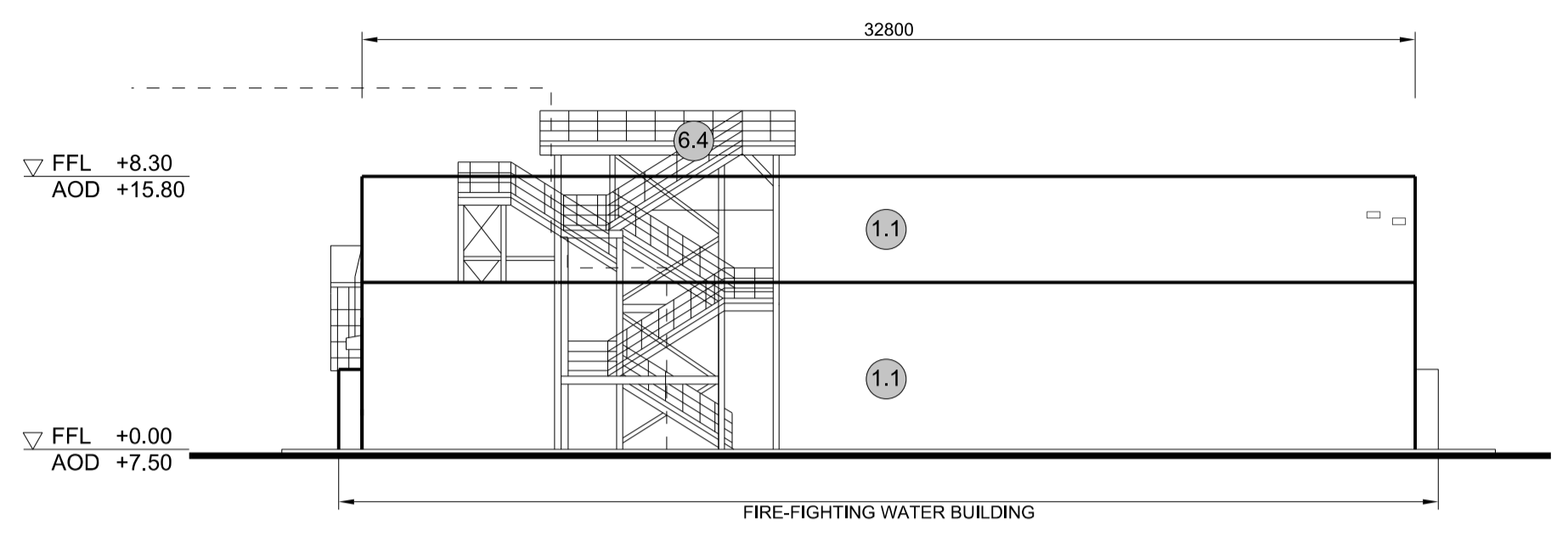
DOCUMENT:
 APPLICATION DRAWING - FOR APPROVAL REGULATION 5(2)(c)

DRAWING TITLE:
 MAIN DEVELOPMENT SITE
 UNIT 2: FIRE-FIGHTING WATER DISTRIBUTION BLDG
 ROOF PLAN & ELEVATIONS

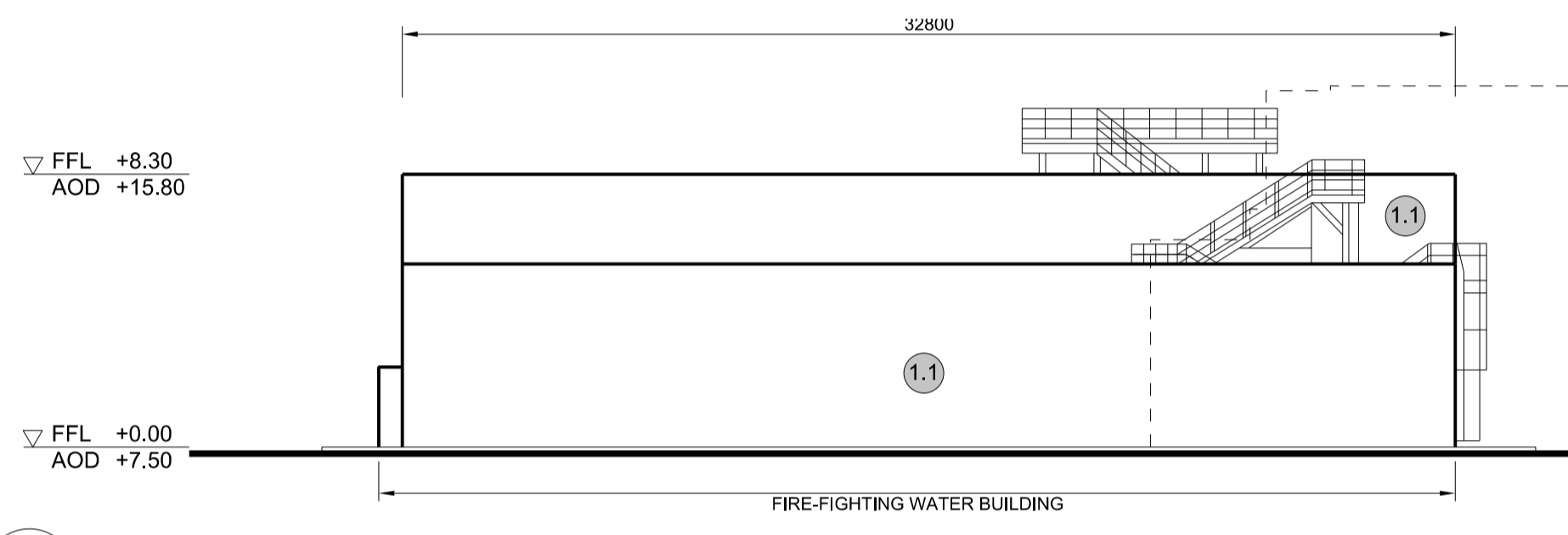
DRAWING NO:
 SZC-SZ0701-XX-000-DRW-100127

DATE: FEB 2020
 DRAWN: CH
 SCALE: 1:200 @ A1

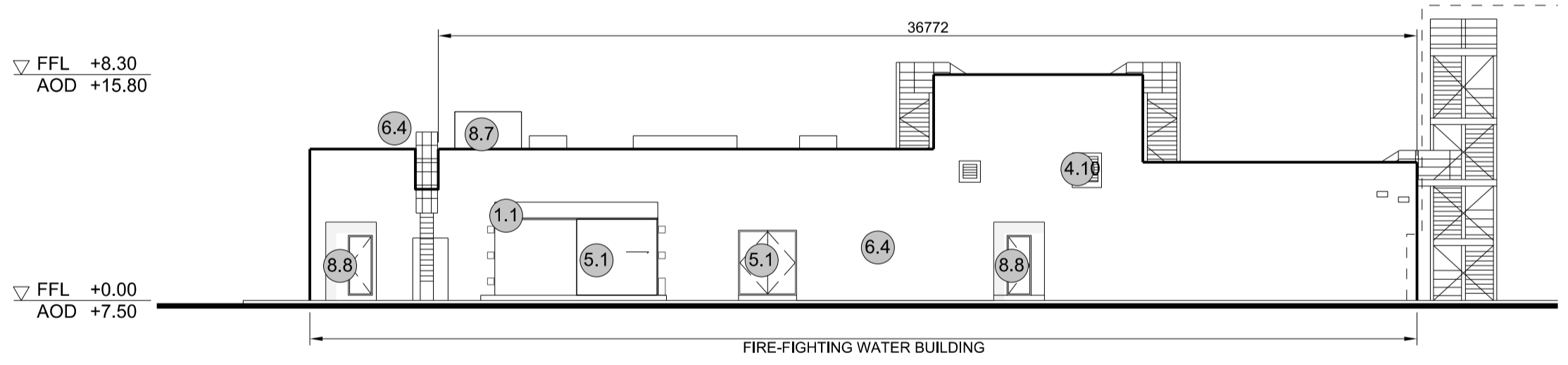
SCALE BAR:
 8m 6 4 2 0 5 10 15m
 SCALE IN METRES
 1:200



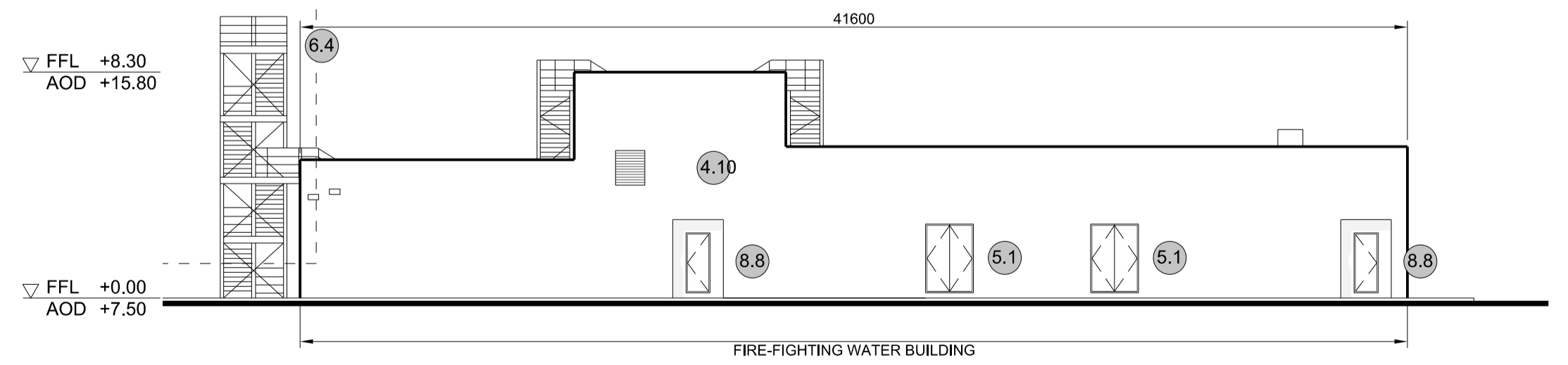
2 EAST ELEVATION
 SCALE 1:200



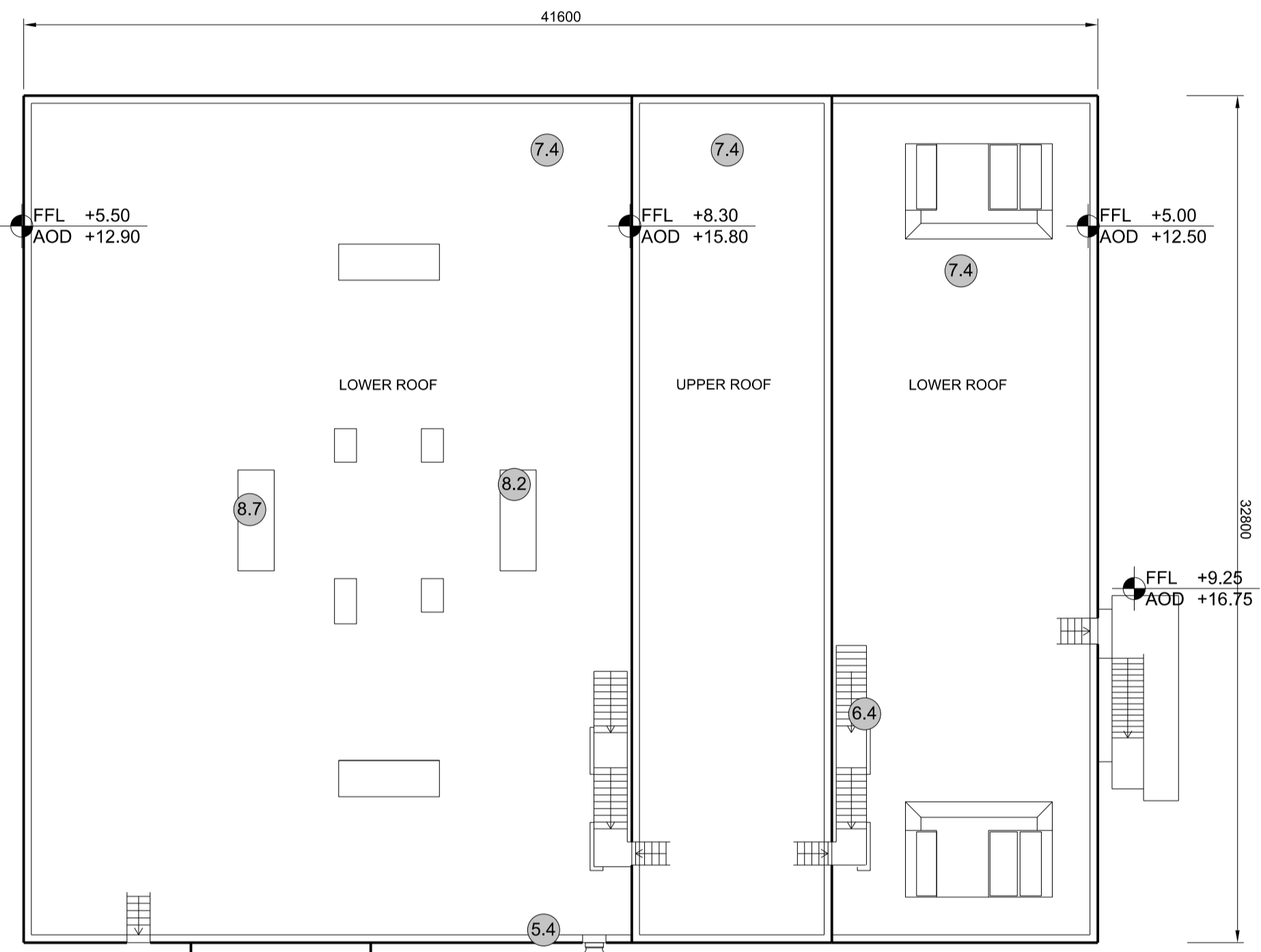
3 WEST ELEVATION
 SCALE 1:200



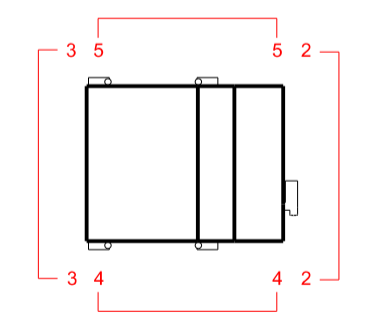
4 SOUTH ELEVATION
 SCALE 1:200



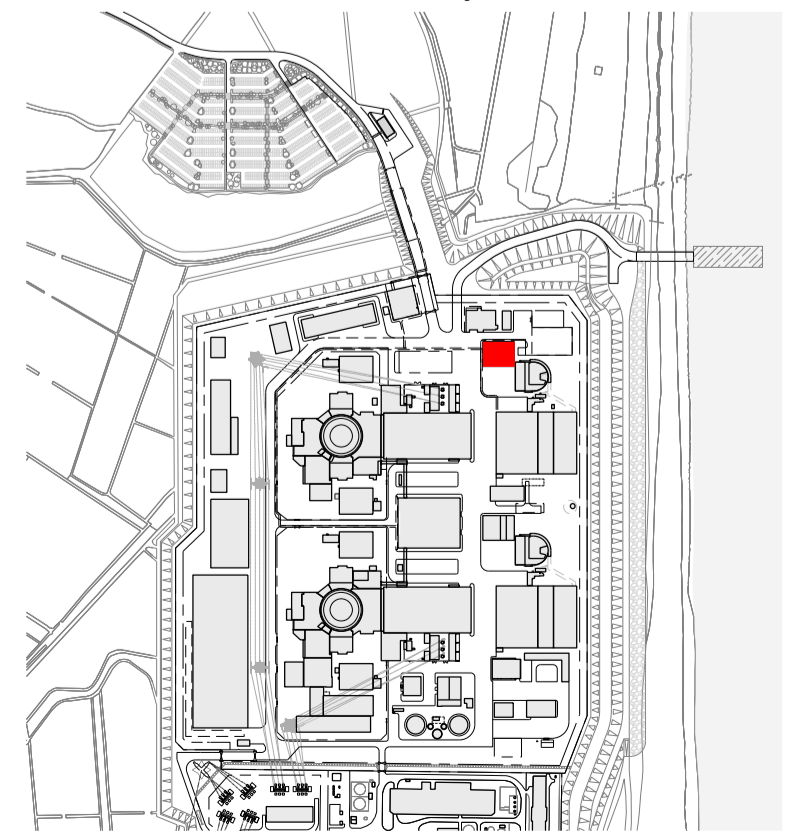
5 NORTH ELEVATION
 SCALE 1:200



1 ROOF PLAN
 SCALE 1:200



SIZEWELL C Elevation Key Plan - NTS



SIZEWELL C Site Key Plan - NTS