

HORIZON

NUCLEAR POWER



Wylfa Newydd Project

8.29 Phasing Strategy

PINS Reference Number: EN010007

Application Reference Number: 8.29

17 January 2019

Revision 2.0

Examination Deadline 4

Regulation Number: 5(2)(q)

Planning Act 2008

Infrastructure Planning (Applications: Prescribed Forms and Procedure) Regulations 2009

[This page is intentionally blank]

Contents

Executive Summary	1
1 Introduction	2
1.1 Purpose	2
2 Wylfa Newydd DCO Project - Indicative Construction Timeline and Trigger Definitions	4
2.1 Indicative Construction Timeline	4
2.2 Key Triggers and Pre-Delivery Restrictions	6
2.3 Definitions of Triggers	8

List of Tables

Table 2-1 Key Mitigation Triggers.....	6
Table 2-2 Definition of Triggers	9

List of Figures

Figure 2-1 Indicative Construction Timeline	4
---	---

[This page is intentionally blank]

Executive Summary

The Wylfa Newydd DCO Project comprises construction works across multiple sites. This includes the Associated Developments which are required to facilitate the construction programme and mitigate the likely effects arising during construction.

This Phasing Strategy has been prepared to set the triggers by which key mitigation will be delivered. Where appropriate this Phasing Strategy contains Horizon's commitment to relevant pre-delivery restrictions prior to the delivery of certain key mitigation. These commitments are made to minimise environmental effects until the key mitigation is delivered and to provide assurances as to the timely delivery of such key mitigation.

Table 2-1 sets out the triggers and the pre-delivery restrictions.

1 Introduction

1.1 Purpose

- 1.1.1 The Wylfa Newydd DCO Project includes a number of key mitigation measures to minimise the likely significant effects that may arise from the construction phase of the Wylfa Newydd DCO Project. These key mitigation measures are incorporated into the Draft DCO as "authorised development" and as such are embedded mitigation.
- 1.1.2 This Phasing Strategy sets out the triggers for the delivery of the key mitigation. This Phasing Strategy is secured through Requirement PW2 in the Draft DCO. The Requirement states that Horizon should inform the Local Authority when the mitigation has commenced and when it has been delivered.
- 1.1.3 The key mitigation measures are as follows:
- Ecological Compensation Sites;
 - the Logistics Centre at Parc Cybi;
 - the A5025 Off-line Highways Improvements;
 - the Park and Ride at Dalar Hir;
 - the Marine Off-Loading Facility (MOLF);
 - Landscape Mounds within the WNDA; and
 - the Site Campus (including the Site Campus Medical Centre) at the Wylfa Newydd Development Area ('WNDA').
- 1.1.4 These key mitigation measures have been identified in the Integrated Traffic and Transport Strategy [APP-107], Workforce Accommodation Strategy [APP-412], the Environmental Statement and the other assessments, as key mitigation to manage the effects (i.e. traffic and socio-economic) related to the Wylfa Newydd DCO Project.
- 1.1.5 A description of the Site Campus, Landscape Mounds, MOLF and Ecological Compensation Sites is set out in Volume D Chapter 1 of the ES [APP-120] and the CMS [APP-136]. A description of the Logistics Centre is set out in chapter H1 of the Environment Statement [APP-355]; the A5025 Off-line Highway Improvements is set out in chapter G1 of the Environment Statement [APP-304]; and the Park and Ride is set out in chapter F1 of the Environment Statement [APP-266].
- 1.1.6 This Phasing Strategy does not set out the sequence of construction works for the Wylfa Newydd DCO Project. The Construction Method Statement ("CMS") [APP-136] describes in greater detail the strategic construction programme, indicative detailed construction phases, activities and techniques that could be undertaken for construction of the Wylfa Newydd Development Area Development. This Phasing Strategy should be read alongside the CMS. The indicative construction timeline for the Wylfa Newydd DCO Project is set out in chapter A2 of the Environmental Statement [APP-056].

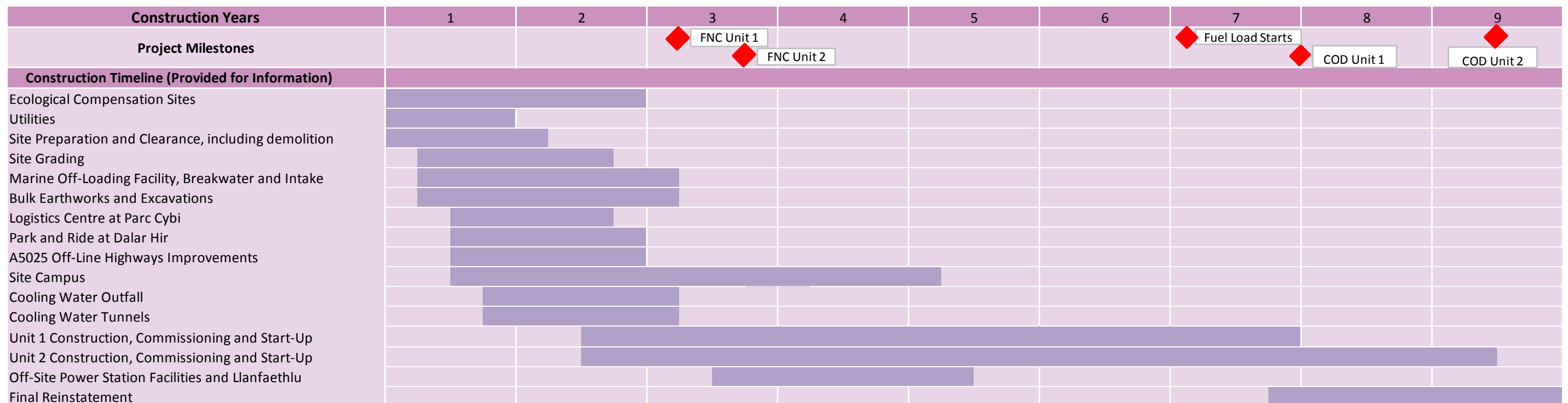
[This page is intentionally blank]

2 Wylfa Newydd DCO Project - Indicative Construction Timeline and Trigger Definitions

2.1 Indicative Construction Timeline

2.1.1 Figure 2-1 below sets out the indicative construction timeline. It illustrates the key Project milestones, including First Nuclear Construction (FNC) and Commercial Operation Date (COD), and the indicative construction timeline for the DCO Project (as set out in the Construction Method Statement [APP-136]). This is provided for information.

Figure 2-1 Indicative Construction Timeline



[This page is intentionally blank]

2.2 Key Triggers and Pre-Delivery Restrictions

2.2.1 Table 2-1 sets out the trigger for each key mitigation measure. Where appropriate this Phasing Strategy contains Horizon's commitment to relevant pre-delivery restrictions prior to the delivery of certain key mitigation. These commitments are made to minimise environmental effects until the key mitigation is delivered and to provide assurances as to the timely delivery of such key mitigation. Reasons for each mitigation can be found in the Mitigation Route Map [REP2-038].

Table 2-1 Key Mitigation Triggers

Key mitigation	Timing for Delivery (Triggers)	Pre-delivery Restriction
Ecological Compensation Sites	To be commenced during the first two dry seasons following DCO commencement.	N/A
Logistics Centre at Parc Cybi	To be delivered prior to the first nuclear construction date for Unit 1.	N/A
A5025 Off-line Highways Improvements	To be delivered prior to the first nuclear construction date for Unit 1.	Prior to the A5025 Off-line Highway Works Improvements opening to traffic, Horizon will not exceed 22 hourly max HGV movements each way at Valley, it will not exceed 160 daily max HGV movements each way at Valley and it will not exceed 2,500 monthly max HGV movements each way at Valley.
Park and Ride Facility at Dalar Hir	To be delivered prior to the first nuclear construction date for Unit 1.	N/A
Marine Off-Loading Facility	To be delivered prior to the first nuclear construction date for Unit 1.	Prior to the A5025 Off-line Highway Works Improvements opening to traffic, Horizon will not exceed 22 hourly max HGV movements each way at Valley, it will not exceed 160 daily max HGV movements each way at Valley and it will not exceed

Key mitigation	Timing for Delivery (Triggers)	Pre-delivery Restriction
		2,500 monthly max HGV movements each way at Valley.
Landscape Mounds A	Construction Mound – To be delivered prior to the first nuclear construction date for Unit 1 ¹ . Operation Mound - To be delivered at the end of final reinstatement.	N/A
Landscape Mound B Noise Bund	Construction Mound - To be delivered on or before 10 months of construction. Operation Mound - To be delivered at the end of final reinstatement.	If the noise bund is not delivered on time Horizon will not be able to exceed the noise levels committed to in the CoCP i.e. Horizon cannot exceed 62dB _{LAeq,1-hour} for more than eight weeks in a year at each relevant receptor.
Landscape Mounds C	Construction Mound - To be delivered prior to the first nuclear construction date for Unit 1 ² . Operation Mound - To be delivered at the end of final reinstatement.	N/A
Landscape Mounds D	Operation Mound- To be delivered at the end of final reinstatement.	N/A
Landscape Mounds E	Construction Mound-To be delivered prior to the first nuclear construction date for Unit 1 ³ . Operation Mound- To be delivered at the end of final reinstatement.	N/A

¹ Please note “Landscape mounds will continue to change through construction as material is added and taken away as required.”

² Please note “Landscape mounds will continue to change through construction as material is added and taken away as required.”

³ Please note “Landscape mounds will continue to change through construction as material is added and taken away as required.”

Key mitigation	Timing for Delivery (Triggers)	Pre-delivery Restriction
Site Campus	To be delivered in time for peak construction.	<p>To ensure the delivery of the trigger, Horizon would deliver the Site Campus in the following three phases:</p> <ul style="list-style-type: none"> • Deliver the first 1,000 beds of Site Campus prior to exceedance of 2,200 Non-Home Based workers. • Deliver further 1,000 beds prior to exceedance of 4,200 Non-Home Based workers and • Deliver the final 2,000 beds prior to exceedance of 6,700 Non-Home Based workers.
Site Campus Medical Centre	Phase 1 of the Site Campus (i.e. deliver the first 1,000 beds of Site Campus prior to exceedance of 2,200 Non-Home Based workers) to include a Centre at the Site Campus appropriate to the number of patients on site.	N/A

2.3 Definitions of Triggers

2.3.1 The definitions of the triggers give clarity about when these elements of mitigation will be delivered during the construction programme. Horizon is committed to delivering this mitigation to reduce any significant effects and ensuring appropriate time frames and triggers, in relation to the indicative Construction Timeline, exist to ensure that the Strategy is enforced. **Table 2.2** highlights these definitions:

Table 2-2 Definition of Triggers

Trigger for Mitigation Delivery	Definition of Trigger
To be delivered prior to the first nuclear construction date for Unit 1.	The date of the first irreversible construction (usually pouring of the structural concrete) for buildings with nuclear safety significance.
To be delivered in time for peak construction.	This is defined as a time by which the Wylfa Newydd DCO Project reaches the peak number of workers (i.e. 9,000 workers) that was an assumption to the ES assessment.
To be delivered at the end of final reinstatement.	This means at the end of final reinstatement (as shown on Figure 2.1 of the CMS [APP-136])
To be delivered on or before 10 months of construction.	This means the delivery of the mitigation on or before the 10 th month of construction after DCO commencement (excluding SPC works).
Definition of 'the first two dry seasons'	This means Horizon should provide notification that this mitigation has commenced during the first two dry seasons following DCO commencement.

[This page is intentionally blank]