

HORIZON

NUCLEAR POWER



Wylfa Newydd Project

8.29 Phasing Strategy

PINS Reference Number: EN010007

Application Reference Number: 8.29

June 2018

Revision 1.0

Regulation Number: 5(2)(q)

Planning Act 2008

Infrastructure Planning (Applications: Prescribed Forms and Procedure) Regulations 2009

[This page is intentionally blank]

Contents

	Executive Summary.....	1
1	Introduction.....	2
1.1	Purpose.....	2
2	Wylfa Newydd DCO Project - "Key Mitigation" Delivery Phasing.....	5
2.1	Phasing sequence.....	5

List of Tables

Table 2-1	Key mitigation summary.....	7
-----------	-----------------------------	---

List of Figures

Figure 2-1	Key mitigation delivery phasing.....	5
------------	--------------------------------------	---

[This page is intentionally blank]

Executive Summary

The Wylfa Newydd DCO Project comprises construction works across multiple sites. This includes the Associated Developments which are required to facilitate the construction programme and mitigate the likely effects arising during construction.

This Phasing Strategy has been prepared to demonstrate the phases of delivery of key mitigation within the wider context of the indicative construction timeline.

Figure 2-1 illustrates in which mitigation delivery phase of the development the key project-wide mitigation will be secured in relation to the indicative construction timeline.

1 Introduction

1.1 Purpose

- 1.1.1 As part of the approach to facilitate construction and mitigate likely significant effects that arise from the construction phase of the DCO Project, several key mitigation measures are proposed.
- 1.1.2 The proposed key mitigation measures are incorporated into the DCO as "authorised development". The key mitigation works are therefore embedded as part of the overall DCO Project.
- 1.1.3 This Phasing Strategy ('the Strategy') has been produced to explain the likely phases of delivery for the key mitigation. The Strategy does not set out the sequence of construction works for all elements of the DCO Project.
- 1.1.4 The key mitigation measures, embedded in the DCO as authorised works for the purposes of delivering mitigation during the construction phases of the overall DCO Project, are as follows:
- the A5025 Off-line Highways Improvements;
 - the Logistics Centre at Parc Cybi;
 - the Park and Ride at Dalar Hir;
 - the Site Campus at the Wylfa Newydd Development Area ('WNDA');
 - Landscape Mounds within the WNDA;
 - the Marine Off-Loading Facility; and
 - Ecological Compensation Sites
- 1.1.5 These mitigation measures have been identified in the Integrated Traffic and Transport Strategy (Application Reference Number: 6.3.20), Workforce Accommodation Strategy (Application Reference Number: 8.4), the Environmental Impact Assessment and the other assessments, as key mitigation to manage the effects (i.e. traffic and socio-economic) related to the Wylfa Newydd DCO Project.
- 1.1.6 The final Phasing Strategy will be secured through a Requirement in the DCO. This will be a subsequent approval by the named authority.
- 1.1.7 This document contains:
- an overview of the sequence when elements of mitigation will be secured and the approach to phasing;
 - the mitigation secured by the draft Order (Application Reference Number: 3.1);
 - a figure illustrating the key phases; and
 - a table showing the interlinks between phases and key mitigation.
- 1.1.8 For the purposes of this Phasing Strategy, four key mitigation delivery phases have been identified. The phases represent the sequence in which key mitigation will be delivered. This is shown in figure 2-1. The figure includes, for information, the broad, high-level construction activities that will take place

across the Wylfa Newydd DCO Project from commencement to full operation of the Wylfa Newydd DCO Project.

- 1.1.9 To clarify, the indicative construction timeline for the whole Wylfa Newydd DCO Project is set out in chapter A2 of the Environmental Statement (Application Reference Number: 6.1.2). The Strategy should also be read alongside the Construction Method Statement (Application Reference Number: 6.4.17), which describes in greater detail the strategic construction programme, detailed construction phases, activities and techniques that will be undertaken for construction of the Wylfa Newydd Development Area Development (WNDA Development). While the construction years shown on figure 2-1 are only indicative, Horizon will endeavour to secure the sequence of this mitigation through the broad phases outlined in figure 2-1.
- 1.1.10 The key purpose of this Phasing Strategy is to provide assurance as to when the key mitigation will be delivered. It ensures that development will not be able to progress until pre-requisite mitigation is delivered. Table 2-1 provides the justifications for the timings of each key mitigation.
- 1.1.11 In accordance with the DCO Requirements, construction of the WNDA Development will be undertaken in general accordance with the CMS. This is to enable an element of flexibility in the precise construction methodology employed by the Contractor at the time of construction. The phases in this Strategy are based on the CMS phases; however, are more high-level in nature in line with the purpose of this Strategy.
- 1.1.12 The Strategy should also be read alongside the *The Wylfa Newydd Code of Construction Practice* ("**CoCP**") and sub-CoCPs (Application Reference Number: 8.6 to 8.12). The Wylfa Newydd CoCP, together with location-specific sub-CoCPs, set out how construction activities will be managed and controlled in order to deliver the mitigation commitments as set out in the ES as well as other assessment processes undertaken (e.g. Shadow Habitat Regulations Assessment).

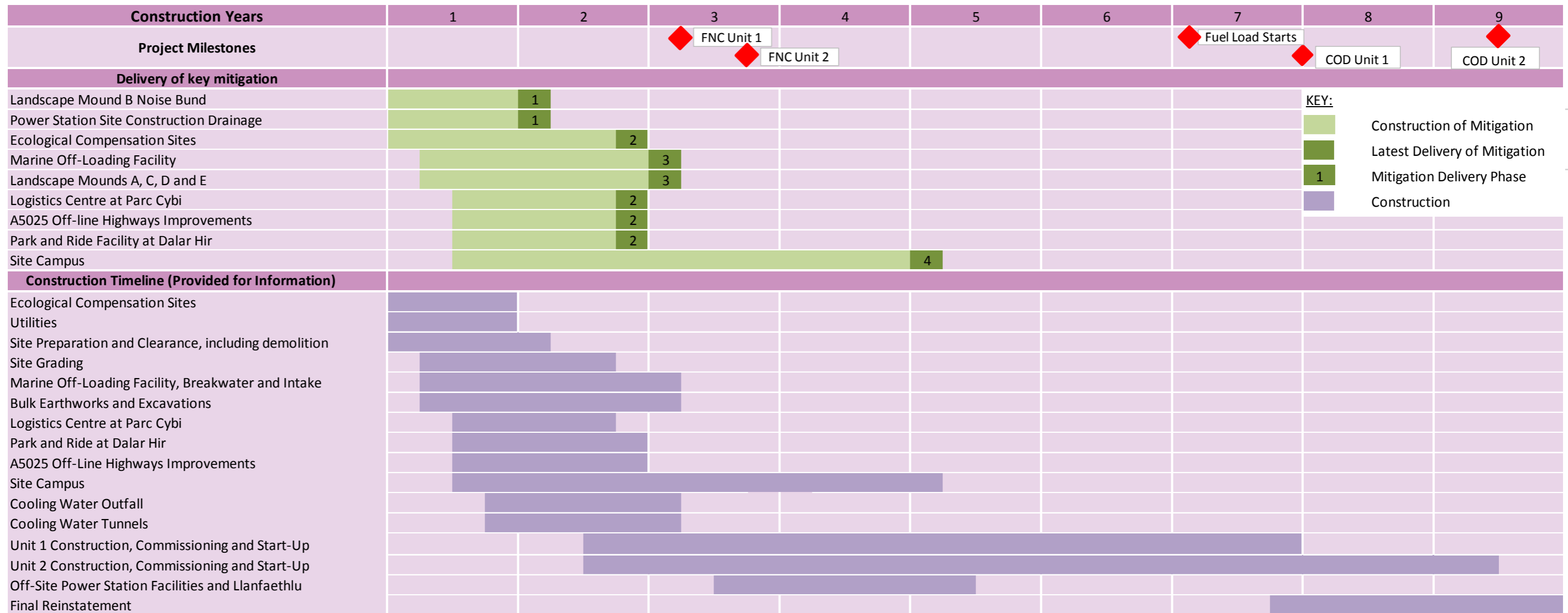
[This page is intentionally blank]

2 Wylfa Newydd DCO Project - "Key Mitigation" Delivery Phasing

2.1 Phasing sequence

2.1.1 Figure 2-1 below sets out the four indicative phases for the delivery of key mitigation described in section 1.1. Project milestones, including First Nuclear Concrete (FNC) and Commercial Operation Date (COD), and the indicative construction timeline for the DCO Project (as set out in the Construction Method Statement) are provided for information. Table 2-1 below provides the justification for the timely delivery of each key mitigation.

Figure 2-1 Key mitigation delivery phasing



[This page is intentionally blank]

2.1.2 Mitigation will be secured by the draft DCO (Application Reference Number: 3.1). Table 2-1 provides a summary of the purpose and timing of each key mitigation measure. Descriptions of each mitigation can be found in the Mitigation Route Map (Application Reference Number: 8.14).

Table 2-1 Key mitigation summary

Key mitigation	Reason for mitigation	Delivery phase	Timing
Power Station Site Construction Drainage	To manage run-off; and To manage flows and meet water quality thresholds (Environmental Quality Standards).	1	To be delivered prior to main construction works at the Power Station Site.
Landscape Mound B Noise Bund	To create noise barriers that construction plant would work behind; and To reduce adverse visual effects on the surrounding area;	1	To be delivered prior to main construction works at the Wylfa Newydd Development Area.
Ecological Compensation Sites	To create new and enhance existing areas of rich-fen habitat to compensate for the effects of construction at the WNDA.	2	To be delivered during the first two dry seasons following DCO grant.
Logistics Centre at Parc Cybi	To enable delivery of the Wylfa Newydd Project; To reduce traffic on the local road network; To reduce the potential traffic related effects on local communities; To reduce the potential traffic related effects on businesses; To reduce the potential traffic related effects on visitors; To reduce air quality related effects; and To reduce noise related effects.	2	To be delivered prior to the indicative first nuclear concrete date for Unit 1.
A5025 Off-line Highways Improvements	To enable delivery of the Wylfa Newydd Project; To mitigate potential traffic related effects; To mitigate noise related effects; To mitigate air quality related effects; Highway improvements along the A5025 between Valley and the Power Station Site will result in the bypassing of the communities of	2	To be delivered prior to the indicative first nuclear concrete date for Unit 1.

Key mitigation	Reason for mitigation	Delivery phase	Timing
	Valley, Llanfachraeth and Llanfaehtlu; Provide a realignment of the highway through Cefn Coch; and An increase in the highway width along the sections of the A5025 between these villages.		
Park and Ride Facility at Dalar Hir	To enable delivery of the Wylfa Newydd Project; To mitigate traffic related effects on the local road network; To significantly reduce the number of car movements on the A5025; To reduce noise and vibration related effects; and To reduce air quality related effects	2	To be delivered prior to the indicative first nuclear concrete date for Unit 1.
Marine Off-Loading Facility	To enable delivery of the Wylfa Newydd Project; To reduce freight movements by road including HGVs; To reduce the number of Abnormal Indivisible Loads by road; To enable construction materials (and bulk materials) to be transported by sea; To reduce the amount of additional traffic; To reduce noise effects at residential receptors; and To reduce the number of HGVs and reduce NO2, PM10 and PM2.5 concentrations;	3	To be delivered prior to the indicative first nuclear concrete date for Unit 1.
Landscape Mounds A, C, D and E	To create noise barriers that construction plant would work behind; and To reduce adverse visual effects on the surrounding area;	3	To be delivered prior to the indicative first nuclear concrete date for Unit 1.
Site Campus	To enable delivery of the Wylfa Newydd Project; To reduce adverse effects on local housing; To reduce traffic related effects associated with daily commuting	4	To be delivered in time for peak construction.

Key mitigation	Reason for mitigation	Delivery phase	Timing
	to and from the Wylfa Newydd Development Area; and Reduce the need for off-site vehicle movements at shift changes that would otherwise occur.		

2.1.3 The key details of the WNDAs Development is set out in Volume D Chapter 1 of the ES (Application Reference Number: 6.4.1) and the CMS (Application Reference Number: 6.4.17). A description of the Logistics Centre is contained in chapter H1 of the Environment Statement (Application Reference Number: 6.8.1), the A5025 Off-line Highway Improvements is contained in chapter G1 of the Environment Statement (Application Reference Number: 6.7.1), Park and Ride is contained in chapter F1 of the Environment Statement (Application Reference Number: 6.6.1), the Off-Site Power Station Facilities is contained in chapter E1 of the Environment Statement (Application Reference Number: 6.5.1).

[This page is intentionally blank]