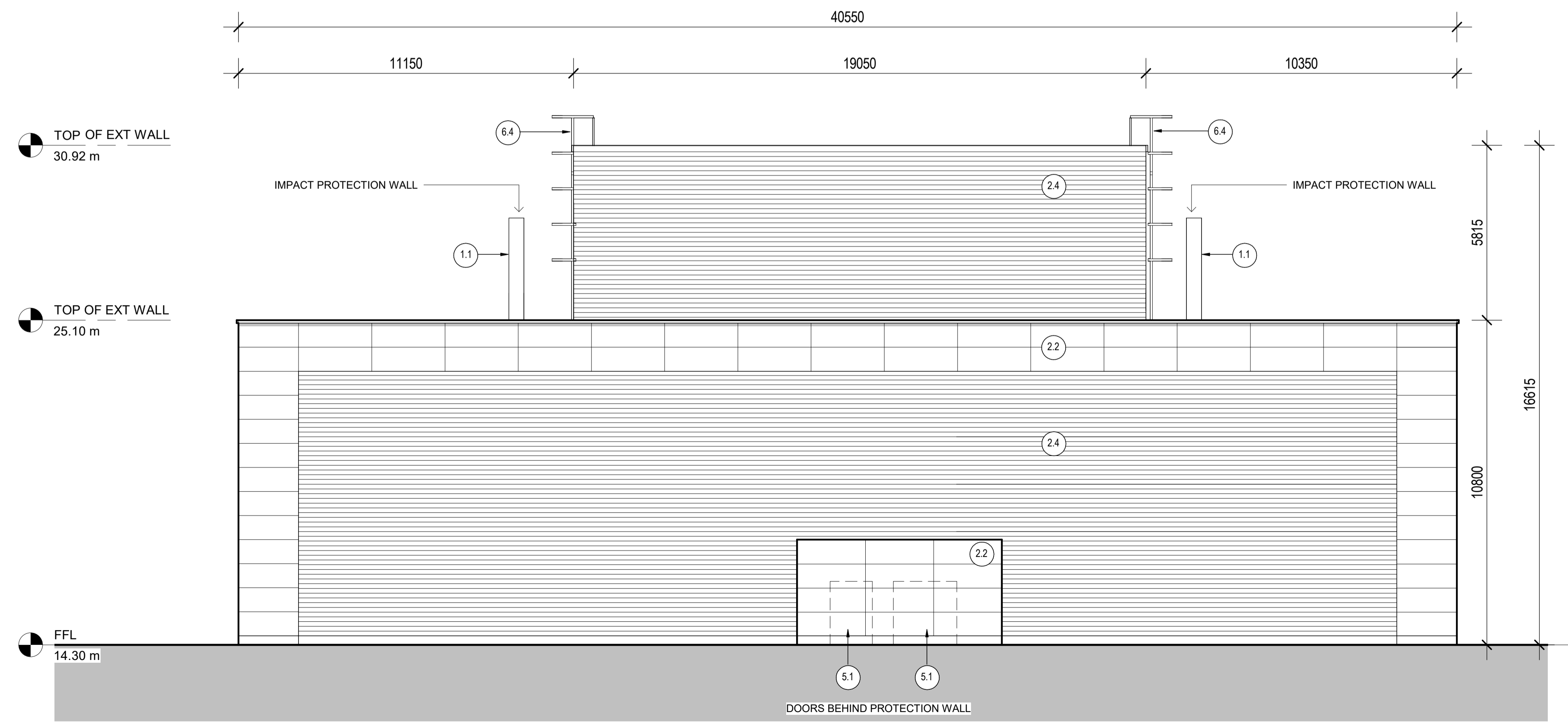


- Materials Key**
- Vertical Enclosure - Wall**
- | | |
|--|--|
| 1 Concrete/ render finishes | 5 Doors |
| 1.1 In-situ concrete | 5.1 Metal door |
| 1.2 Pre-cast concrete | 5.2 Metal louvre door |
| 1.3 Render finish | 5.3 Glazed door |
| | 5.4 Access gates |
| 2 Cladding | 6 Window/ metalwork accessories |
| 2.1 Aluminium standing seam | 6.1 External fabric blinds |
| 2.2 Aluminium panels | 6.2 Cavity venetian blinds |
| 2.3 Aluminium planks | 6.3 Glazed balustrade |
| 2.4 Profiled steel panels | 6.4 Metal stairs and ladders |
| 2.5 Flat steel panels | |
| 2.6 Fibre cement cladding | Horizontal Enclosure - Roof |
| 2.7 Glass reinforced plastic | |
| 3 Glazing/ translucent materials | 7 Roofing |
| 3.1 Cast glass c-channel | 7.1 Sedum roof |
| 3.2 Frameless glazing | 7.2 Ballast |
| 3.3 Framed glazing | 7.3 Standing seam roof |
| 3.4 Opaque glazed spandrel panel | 7.4 Concrete roof |
| 3.5 Polycarbonate translucent cladding | |
| 4 External wall features | 8 Roofing accessories |
| 4.1 Aluminium trims, copings and casings | 8.1 Roof light |
| 4.2 Aluminium louvres | 8.2 Roof vents and hatches |
| 4.3 Glass louvres | 8.3 Metal cappings and copings |
| 4.4 Aluminium brise-soleil | 8.4 Paving |
| 4.5 Glass brise-soleil | 8.5 PVs and solar panels |
| 4.6 Mesh expanded metal panels | 8.6 Timber decking |
| 4.7 Fencing | |
| 4.8 Barbed tape | 9 Additional Materials |
| 4.9 Retractable steel shutters | 9.1 Bitumen roof |

1 NORTH ELEVATION
SCALE 1:100



2 SOUTH ELEVATION
SCALE 1:100

REVISION	DATE	DRAWN	CHECKED	REASONS FOR REVISION/ COMMENTS	APPROVED
01	JUNE 2020	GA	GA	PERMANENT DEVELOPMENT DCO CHANGE SUBMISSION	NNB



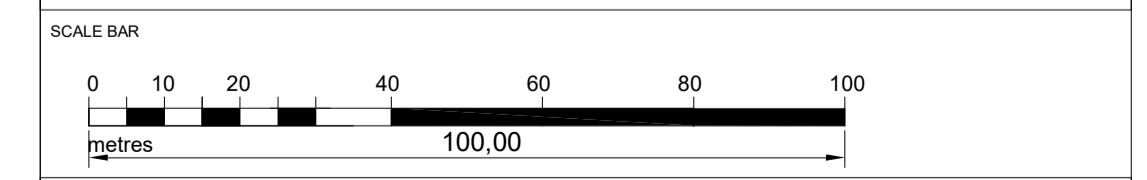
HINKLEY POINT C

DRAWING TITLE
Hinkley Point C Development Site
Emergency Response Centre (HUM)

Elevations
Regulation 5(2)(o)

PROJECT DRAWING REFERENCE NO. HINK-A2-HUM-00-GE-002	REVISION 01	SCALE 1:100 @ A1	DATE JUN 2020
--	----------------	---------------------	------------------

DOCUMENT
DCO Change Application Drawing - Detail (for Approval)



- DRAWING SECURITY CLASSIFICATION
- PROTECTIVE MARKING REQUIRED
 - NOT PROTECTIVELY MARKED