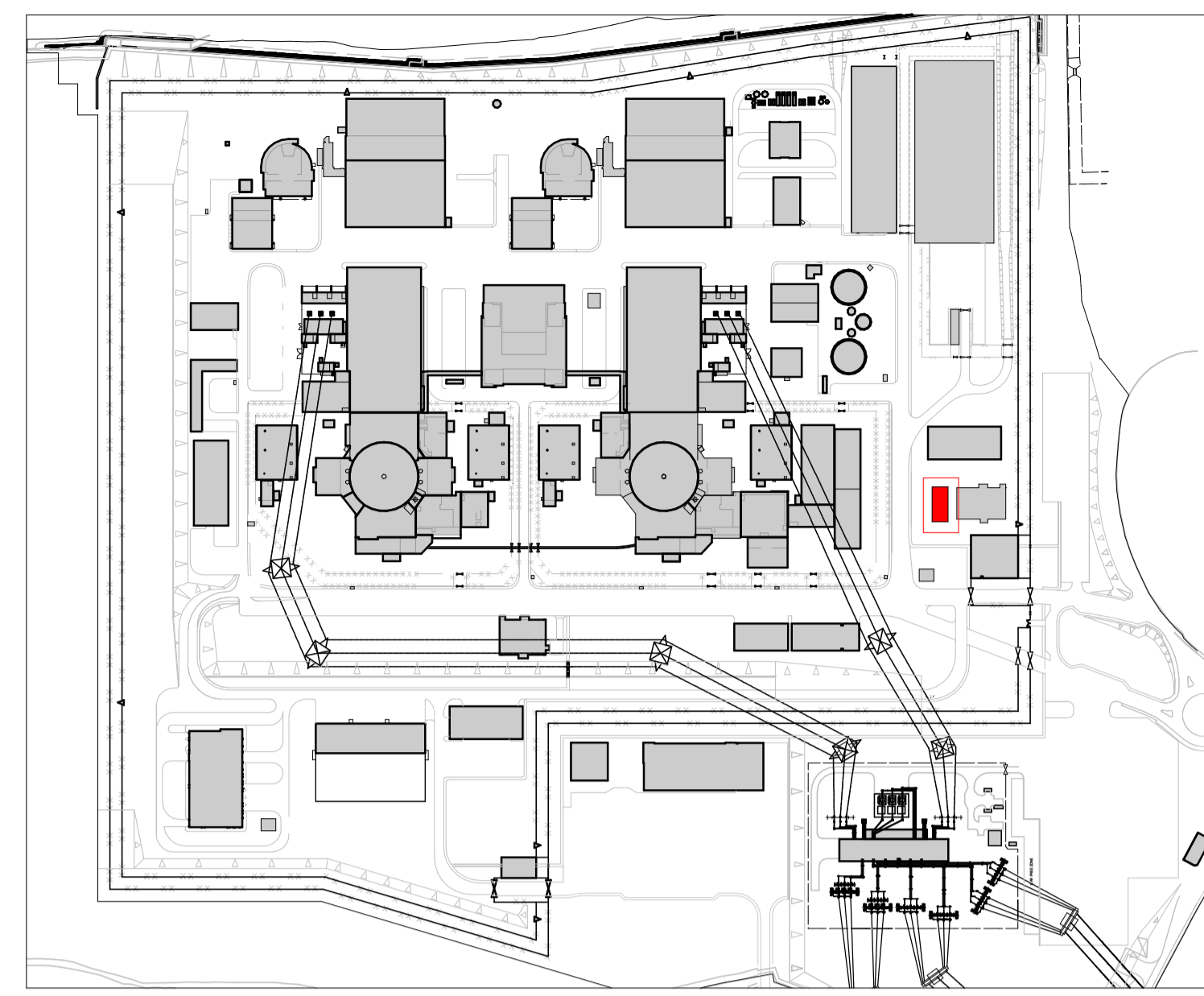
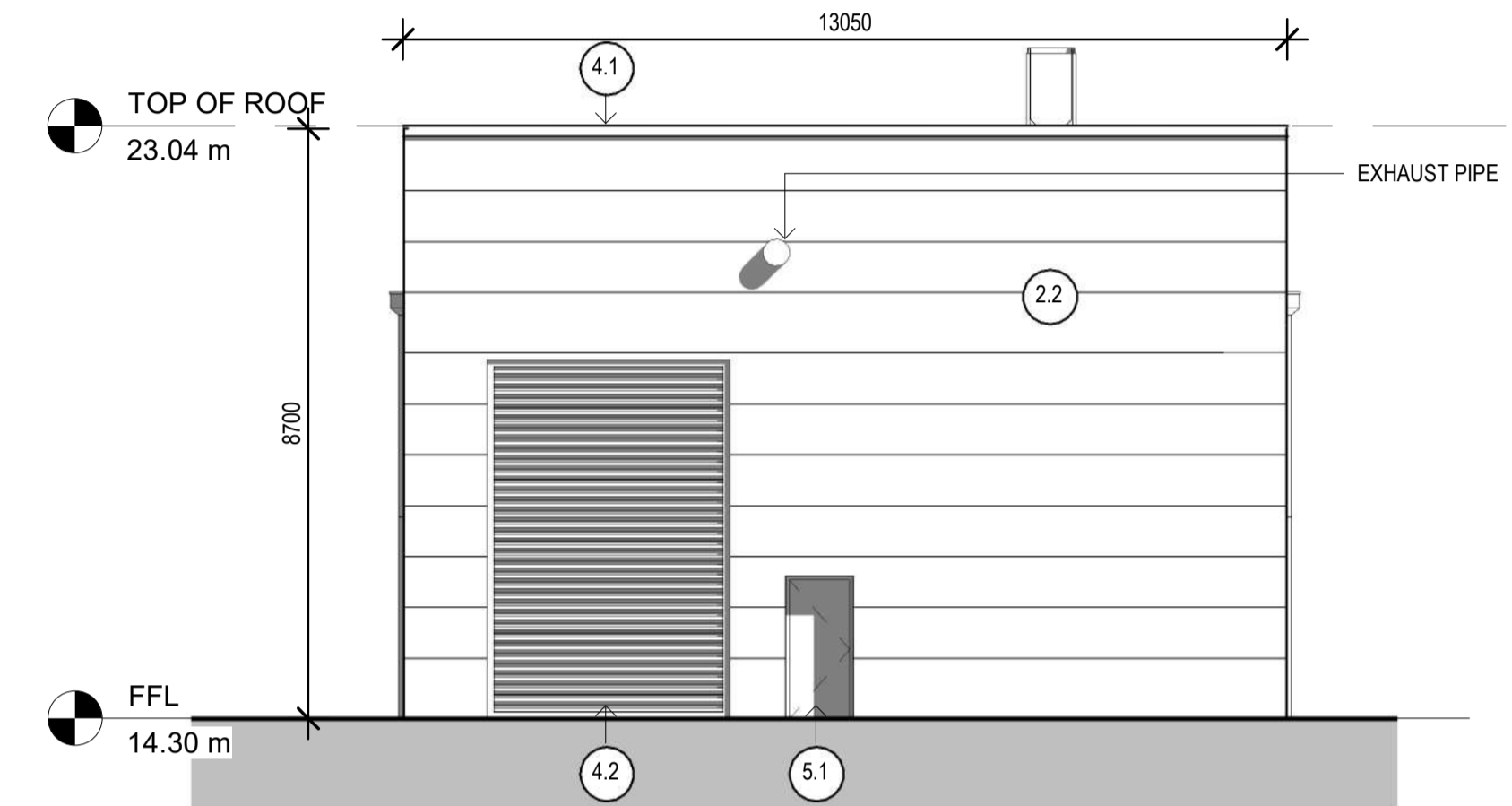


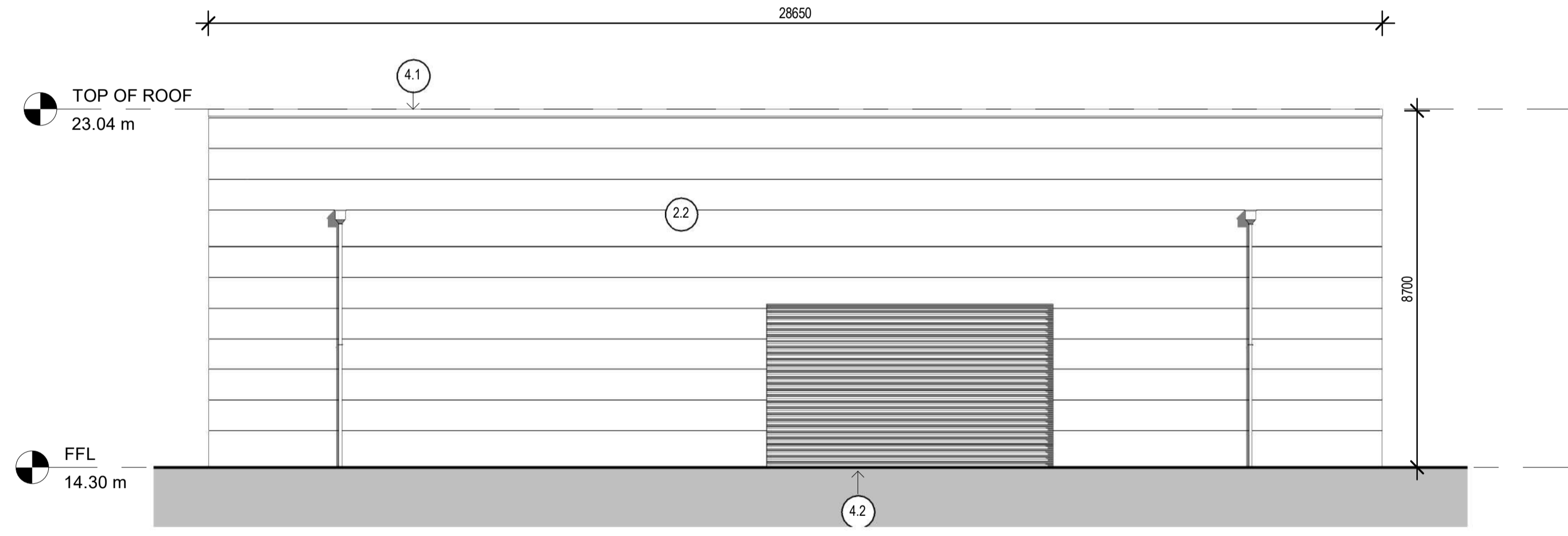
1 GENERAL ARRANGEMENT ROOF PLAN
SCALE 1:100



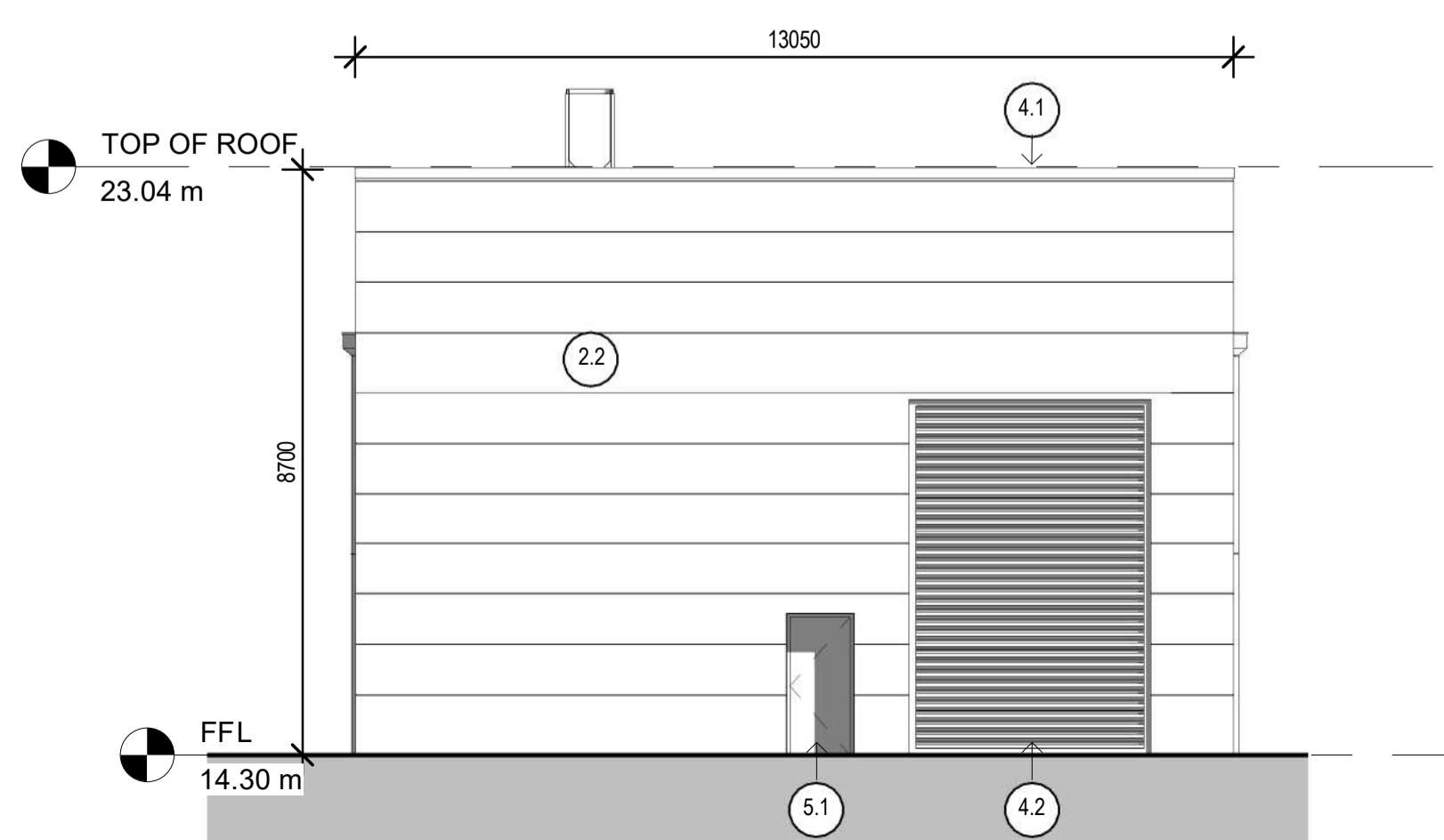
KEY PLAN - SCALE 1:5000



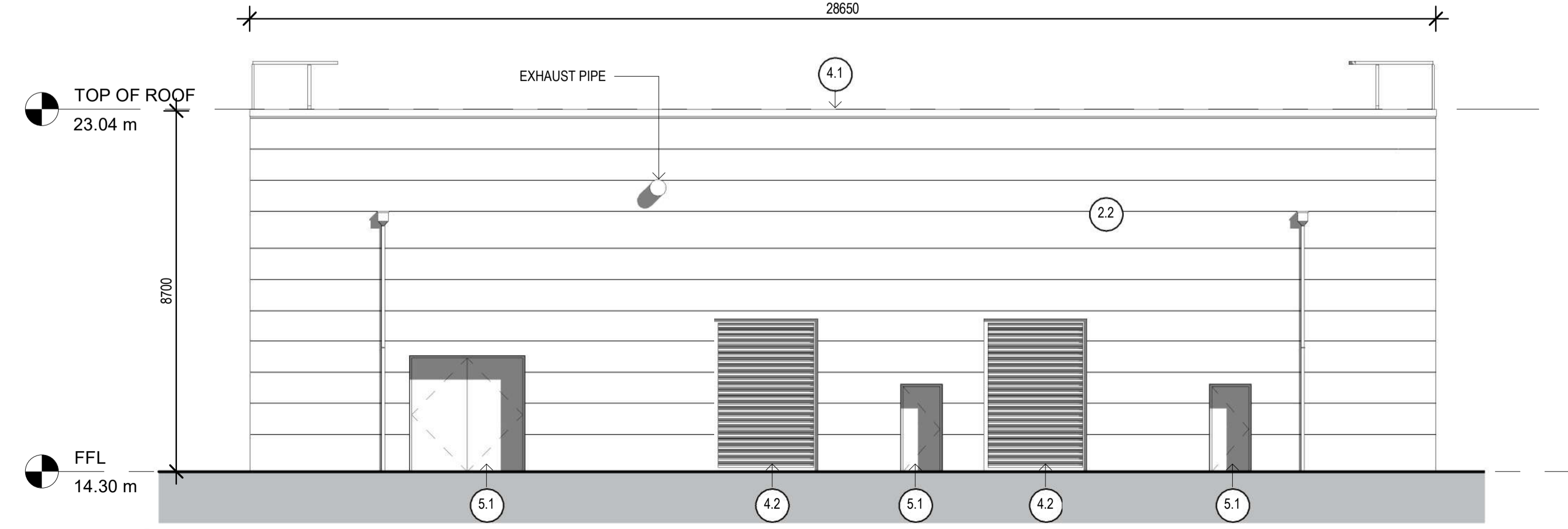
2 NORTH ELEVATION
SCALE 1:100



3 EAST ELEVATION
SCALE 1:100



4 SOUTH ELEVATION
SCALE 1:100



5 WEST ELEVATION
SCALE 1:100

Materials Key

Vertical Enclosure - Wall

1 Concrete/ render finishes	5 Doors
1.1 In-situ concrete	5.1 Metal door
1.2 Pre-cast concrete	5.2 Metal louvre door
1.3 Render finish	5.3 Glazed door
	5.4 Access gates
2 Cladding	6 Window/ metalwork accessories
2.1 Aluminium standing seam	6.1 External fabric blinds
2.2 Aluminium panels	6.2 Cavity venetian blinds
2.3 Aluminium planks	6.3 Glazed balustrade
2.4 Profiled steel panels	6.4 Metal stairs and ladders
2.5 Flat steel panels	
2.6 Fibre cement cladding	Horizontal Enclosure - Roof
2.7 Glass reinforced plastic	
3 Glazing/ translucent materials	7 Roofing
3.1 Cast glass c-channel	7.1 Sedum roof
3.2 Frameless glazing	7.2 Ballast
3.3 Framed glazing	7.3 Standing seam roof
3.4 Opaque glazed spandrel panel	7.4 Concrete roof
3.5 Polycarbonate translucent cladding	
4 External wall features	8 Roofing accessories
4.1 Aluminium trims, copings and casings	8.1 Roof light
4.2 Aluminium louvres	8.2 Roof vents and hatches
4.3 Glass louvres	8.3 Metal cappings and copings
4.4 Aluminium brise-soleil	8.4 Paving
4.5 Glass brise-soleil	8.5 PVs and solar panels
4.6 Mesh expanded metal panels	8.6 Timber decking
4.7 Fencing	
4.8 Barbed tape	9 Additional Materials
4.9 Retractable steel shutters	9.1 Bitumen roof

REVISION	DATE	DRAWN	CHECKED	REASONS FOR REVISION COMMENTS	APPROVED
01	JUNE 2020	LS	SM	FOR DCO CHANGE SUBMISSION	LI

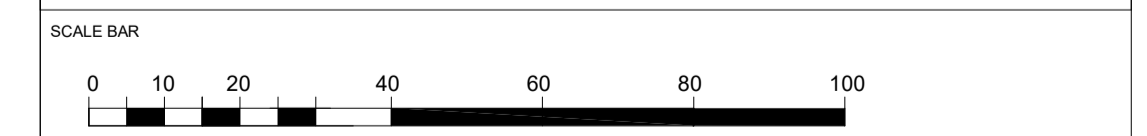


HINKLEY POINT C

DRAWING TITLE
Hinkley Point C Development Site
Emergency Response Energy Centre (HDU)
Roof Plan and Elevations
Regulation 5(2)(o)

PROJECT DRAWING REFERENCE NO. HINK-A2-HDU-00-GP-020	REVISION 01	SCALE 1:100 @ A1	DATE JUN 2020
--	----------------	---------------------	------------------

DOCUMENT
DCO Change Application Drawing - Detail (for Approval)



DRAWING SECURITY CLASSIFICATION
 PROTECTIVE MARKING REQUIRED
 NOT PROTECTIVELY MARKED